

For Research Use Only

# GAST Recombinant monoclonal antibody, PBS Only (Capture)

Catalog Number: 88429-2-PBS



## Basic Information

<b>Catalog Number:</b> 88429-2-PBS	<b>GenBank Accession Number:</b> NM_000805.4	<b>Purification Method:</b> Protein A purification
<b>Source:</b> Rabbit	<b>GeneID (NCBI):</b> 2520	<b>CloneNo.:</b> 260471H4
<b>Isotype:</b> IgG	<b>UNIPROT ID:</b> P01350	
<b>Immunogen Catalog Number:</b> EG3089	<b>Full Name:</b> gastrin	
	<b>Calculated MW:</b> 11 kDa	

## Applications

**Tested Applications:**  
Sandwich ELISA, Indirect ELISA

**Species Specificity:**  
human

## Background Information

### Storage

**Storage:**  
Store at -80°C.  
**The product is shipped with ice packs. Upon receipt, store it immediately at -80°C**

**Storage Buffer:**  
PBS only, pH7.3

For technical support and original validation data for this product please contact:

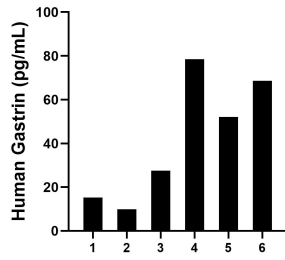
T: 4006900926

E: [Proteintech-CN@ptglab.com](mailto:Proteintech-CN@ptglab.com)

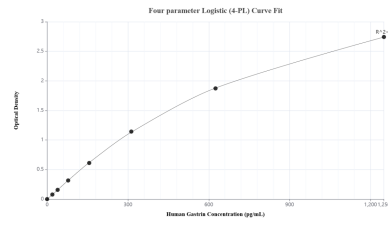
W: [ptgcn.com](http://ptgcn.com)

**This product is exclusively available under Proteintech Group brand and is not available to purchase from any other manufacturer.**

## Selected Validation Data



Plasma of six individual healthy human donors was measured. The Gastrin concentration of detected samples was determined to be 41.9 pg/mL with a range of 9.8-78.4 pg/mL.



Sandwich ELISA standard curve of MP03432-1, Human Gastrin Recombinant Matched Antibody Pair - PBS only. 88429-2-PBS was coated to a plate as the capture antibody and incubated with serial dilutions of standard Eg3089. 88429-1-PBS was HRP conjugated as the detection antibody. Range: 19.5-1250 pg/mL.