

For Research Use Only

TAF6L Recombinant monoclonal antibody, PBS Only (Capture)

Catalog Number: 88217-3-PBS



Basic Information

Catalog Number: 88217-3-PBS	GenBank Accession Number: BC008785	Purification Method: Protein A purification
Source: Rabbit	GeneID (NCBI): 10629	CloneNo.: 260434F4
Isotype: IgG	UNIPROT ID: Q9Y6J9	
Immunogen Catalog Number: AG8180	Full Name: TAF6-like RNA polymerase II, p300/CBP-associated factor (PCAF)- associated factor, 65kDa	
	Calculated MW: 622 aa, 68 kDa	

Applications

Tested Applications:
Cytometric bead array, Indirect ELISA

Species Specificity:
human

Background Information

Storage

Storage:
Store at -80°C.
The product is shipped with ice packs. Upon receipt, store it immediately at -80°C

Storage Buffer:
PBS only, pH7.3

For technical support and original validation data for this product please contact:

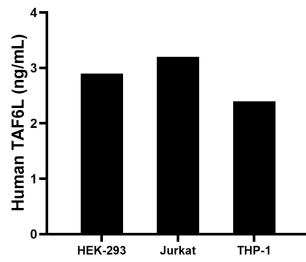
T: 4006900926

E: Proteintech-CN@ptglab.com

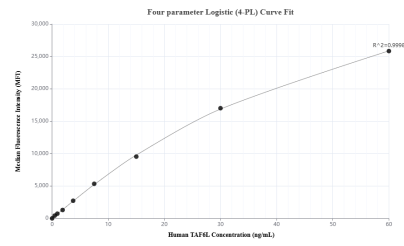
W: ptgcn.com

This product is exclusively available under Proteintech Group brand and is not available to purchase from any other manufacturer.

Selected Validation Data



The mean TAF6L concentration was determined to be 2.9 ng/mL in HEK-293 cell extract based on a 1.2 mg/mL extract load, 3.2 ng/mL in Jurkat cell extract based on a 1.2 mg/mL extract load, 2.4 ng/mL in THP-1 cell extract based on a 1.2 mg/mL extract load.



Cytometric bead array standard curve of MPO3409-1, TAF6L Recombinant Matched Antibody Pair, PBS Only. Capture antibody: 88217-3-PBS. Detection antibody: 88217-2-PBS. Standard: Ag8180. Range: 0.469-60 ng/mL