

For Research Use Only

# MZB1 Recombinant monoclonal antibody, PBS Only (Capture)

Catalog Number: 88201-3-PBS



## Basic Information

<b>Catalog Number:</b> 88201-3-PBS	<b>GenBank Accession Number:</b> BC021275	<b>Purification Method:</b> Protein A purification
<b>Source:</b> Rabbit	<b>GeneID (NCBI):</b> 51237	<b>CloneNo.:</b> 260678B2
<b>Isotype:</b> IgG	<b>UNIPROT ID:</b> Q8WU39	
<b>Immunogen Catalog Number:</b> AG42451	<b>Full Name:</b> hypothetical protein MGC29506	
	<b>Calculated MW:</b> 189 aa, 21 kDa	

## Applications

**Tested Applications:**  
Cytometric bead array, Indirect ELISA

**Species Specificity:**  
human

## Background Information

### Storage

**Storage:**  
Store at -80°C.  
**The product is shipped with ice packs. Upon receipt, store it immediately at -80°C**

**Storage Buffer:**  
PBS only, pH7.3

For technical support and original validation data for this product please contact:

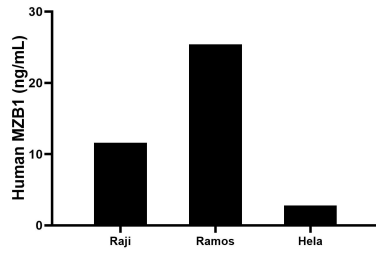
T: 4006900926

E: [Proteintech-CN@ptglab.com](mailto:Proteintech-CN@ptglab.com)

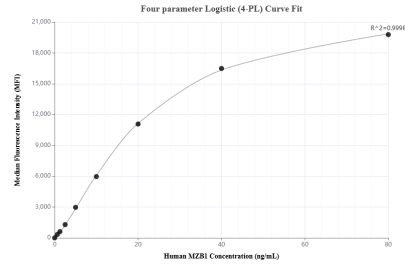
W: [ptgcn.com](http://ptgcn.com)

**This product is exclusively available under Proteintech Group brand and is not available to purchase from any other manufacturer.**

## Selected Validation Data



The mean MZB1 concentration was determined to be 11.6 ng/mL in Raji cell extract based on a 1.0 mg/mL extract load, 25.4 ng/mL in Ramos cell extract based on a 1.0 mg/mL extract load, 2.8 ng/mL in HeLa cell extract based on a 1.0 mg/mL extract load.



Cytometric bead array standard curve of MP03414-1, MZB1 Recombinant Matched Antibody Pair, PBS Only. Capture antibody: 88201-3-PBS. Detection antibody: 88201-2-PBS. Standard: Ag42451. Range: 0.625-80 ng/mL.