

For Research Use Only

MZB1 Recombinant monoclonal antibody, PBS Only (Detector)

Catalog Number:88201-2-PBS



Basic Information

Catalog Number: 88201-2-PBS	GenBank Accession Number: BC021275	Purification Method: Protein A purification
Source: Rabbit	GeneID (NCBI): 51237	CloneNo.: 260678E6
Isotype: IgG	UNIPROT ID: Q8WU39	
Immunogen Catalog Number: AG42451	Full Name: hypothetical protein MGC29506	
	Calculated MW: 189 aa, 21 kDa	

Applications

Tested Applications:
Cytometric bead array, Sandwich ELISA, Indirect ELISA

Species Specificity:
human

Background Information

Storage

Storage:
Store at -80°C.
The product is shipped with ice packs. Upon receipt, store it immediately at -80°C

Storage Buffer:
PBS only, pH7.3

For technical support and original validation data for this product please contact:

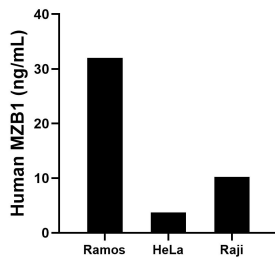
T: 4006900926

E: Proteintech-CN@ptglab.com

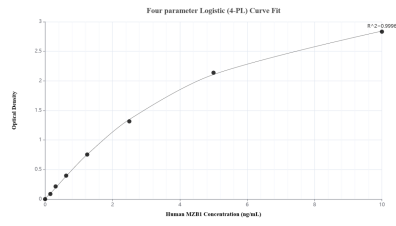
W: ptgcn.com

This product is exclusively available under Proteintech Group brand and is not available to purchase from any other manufacturer.

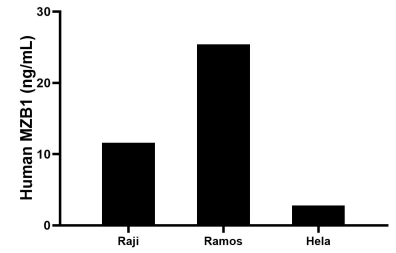
Selected Validation Data



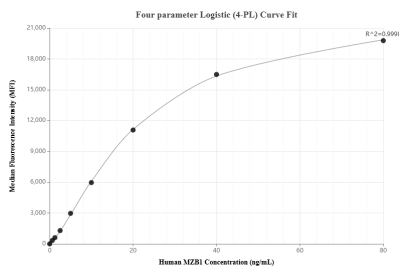
The mean MZB1 concentration was determined to be 32.02 ng/mL in Ramos cell extract based on a 1.20 mg/mL extract load, 3.72 ng/mL in HeLa cell extract based on a 1.20 mg/mL extract load and 10.25 ng/mL in Raji cell extract based on a 1.50 mg/mL extract load.



Sandwich ELISA standard curve of MP03414-2, Human MZB1 Recombinant Matched Antibody Pair - PBS only. 88201-4-PBS was coated to a plate as the capture antibody and incubated with serial dilutions of standard Ag42451. 88201-2-PBS was HRP conjugated as the detection antibody. Range: 0.156-10 ng/mL



The mean MZB1 concentration was determined to be 11.6 ng/mL in Raji cell extract based on a 1.0 mg/mL extract load, 25.4 ng/mL in Ramos cell extract based on a 1.0 mg/mL extract load, 2.8 ng/mL in HeLa cell extract based on a 1.0 mg/mL extract load.



Cytometric bead array standard curve of MP03414-1, MZB1 Recombinant Matched Antibody Pair, PBS Only. Capture antibody: 88201-3-PBS. Detection antibody: 88201-2-PBS. Standard: Ag42451. Range: 0.625-80 ng/mL