

For Research Use Only

CD300LD Recombinant monoclonal antibody, PBS Only (Detector)

Catalog Number: 88179-2-PBS



Basic Information

Catalog Number: 88179-2-PBS	GenBank Accession Number: NM_001115152.2	Purification Method: Protein A purification
Source: Rabbit	GeneID (NCBI): 100131439	CloneNo.: 253533G11
Isotype: IgG	UNIPROT ID: Q6UXZ3	
Immunogen Catalog Number: EG6126	Full Name: CD300 molecule-like family member d	
	Calculated MW: 22 kDa	

Applications

Tested Applications:
Cytometric bead array, Indirect ELISA

Species Specificity:
human

Background Information

Storage

Storage:
Store at -80°C.
The product is shipped with ice packs. Upon receipt, store it immediately at -80°C

Storage Buffer:
PBS only, pH7.3

For technical support and original validation data for this product please contact:

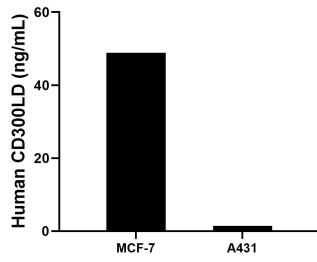
T: 4006900926

E: Proteintech-CN@ptglab.com

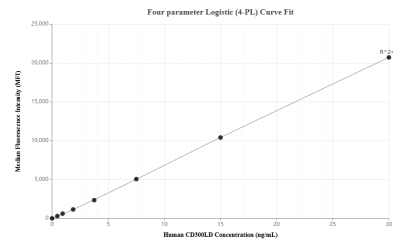
W: ptgcn.com

This product is exclusively available under Proteintech Group brand and is not available to purchase from any other manufacturer.

Selected Validation Data



The mean CD300LD concentration was determined to be 48.9 ng/mL in MCF-7 cell extract based on a 1.2 mg/mL extract load, 1.4 ng/mL in A431 cell extract based on a 1.2 mg/mL extract load.



Cytometric bead array standard curve of MP03358-1, CD300LD Recombinant Matched Antibody Pair, PBS Only. Capture antibody: 88179-3-PBS. Detection antibody: 88179-2-PBS. Standard: Eg6126. Range: 0.469-30 ng/mL.