

For Research Use Only

Integrin alpha-10 Recombinant monoclonal antibody, PBS Only (Detector)

Catalog Number: 88138-2-PBS



Basic Information

Catalog Number: 88138-2-PBS	GenBank Accession Number: NM_003637.5	Purification Method: Protein A purification
Source: Rabbit	GeneID (NCBI): 8515	CloneNo.: 260141C9
Isotype: IgG	UNIPROT ID: O75578-1	
Immunogen Catalog Number: EG6182	Full Name: integrin, alpha 10	
	Calculated MW: 128 kDa	

Applications

Tested Applications:
Cytometric bead array, Indirect ELISA

Species Specificity:
human

Background Information

Storage

Storage:
Store at -80°C.
The product is shipped with ice packs. Upon receipt, store it immediately at -80°C

Storage Buffer:
PBS only, pH7.3

For technical support and original validation data for this product please contact:

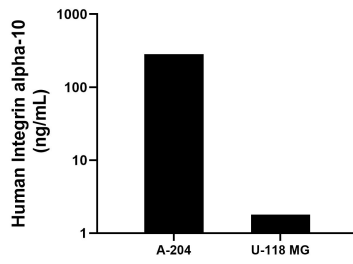
T: 4006900926

E: Proteintech-CN@ptglab.com

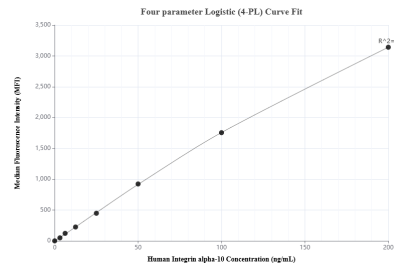
W: ptgcn.com

This product is exclusively available under Proteintech Group brand and is not available to purchase from any other manufacturer.

Selected Validation Data



The mean Integrin alpha-10 concentration was determined to be 282.7 ng/mL in A-204 cell extract based on a 1.0 mg/mL extract load, 1.8 ng/mL in U-118 MG cell extract based on a 1.0 mg/mL extract load.



Cytometric bead array standard curve of MP03362-1, Integrin alpha-10 Recombinant Matched Antibody Pair, PBS Only. Capture antibody: 88138-3-PBS. Detection antibody: 88138-2-PBS. Standard: Eg6182. Range: 3.125-200 ng/mL