

For Research Use Only

# SH3RF1 Recombinant monoclonal antibody, PBS Only (Capture)

Catalog Number: 88135-3-PBS



## Basic Information

Catalog Number:

88135-3-PBS

Source:

Rabbit

Isotype:

IgG

Immunogen Catalog Number:

AG6243

GenBank Accession Number:

BC053671

GeneID (NCBI):

57630

UNIPROT ID:

Q7Z6J0

Full Name:

SH3 domain containing ring finger 1

Calculated MW:

93 kDa

Purification Method:

Protein A purification

CloneNo.:

260354H4

## Applications

Tested Applications:

Cytometric bead array, Indirect ELISA

Species Specificity:

human

## Background Information

### Storage

Storage:

Store at -80°C.

The product is shipped with ice packs. Upon receipt, store it immediately at -80°C

Storage Buffer:

PBS only, pH7.3

For technical support and original validation data for this product please contact:

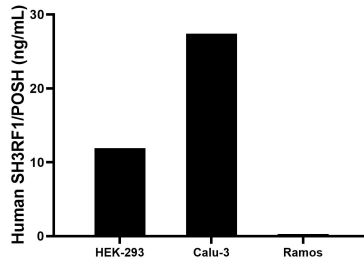
T: 4006900926

E: [Proteintech-CN@ptglab.com](mailto:Proteintech-CN@ptglab.com)

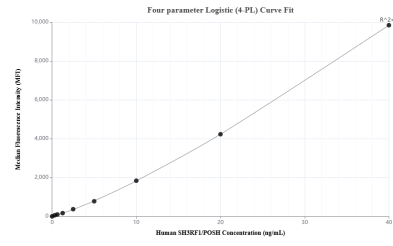
W: [ptgcn.com](http://ptgcn.com)

This product is exclusively available under Proteintech Group brand and is not available to purchase from any other manufacturer.

## Selected Validation Data



The mean SH3RF1/POSH concentration was determined to be 11.9 ng/mL in HEK-293 cell extract based on a 1.2 mg/mL extract load, 27.4 ng/mL in Calu-3 cell extract based on a 1.2 mg/mL extract load, 0.4 ng/mL in Ramos cell extract based on a 1.5 mg/mL extract load.



Cytometric bead array standard curve of MP03367-1, SH3RF1/POSH Recombinant Matched Antibody Pair, PBS Only. Capture antibody: 88135-3-PBS. Detection antibody: 88135-2-PBS. Standard: Ag6243. Range: 0.312-40 ng/mL.