

For Research Use Only

IGF2BP1 Recombinant monoclonal antibody, PBS Only (Capture)

Catalog Number: 88123-2-PBS



Basic Information

Catalog Number: 88123-2-PBS	GenBank Accession Number: BC156957	Purification Method: Protein A purification
Source: Rabbit	GeneID (NCBI): 10642	CloneNo.: 260323B2
Isotype: IgG	UNIPROT ID: Q9NZI8	
Immunogen Catalog Number: AG18859	Full Name: insulin-like growth factor 2 mRNA binding protein 1	
	Calculated MW: 577 aa, 63 kDa	

Applications

Tested Applications:
Cytometric bead array, Indirect ELISA

Species Specificity:
human

Background Information

Storage

Storage:
Store at -80°C.
The product is shipped with ice packs. Upon receipt, store it immediately at -80°C

Storage Buffer:
PBS only, pH7.3

For technical support and original validation data for this product please contact:

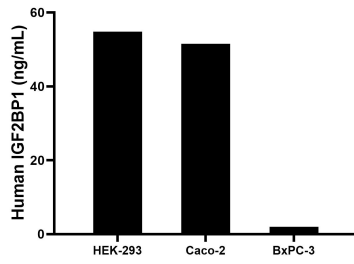
T: 4006900926

E: Proteintech-CN@ptglab.com

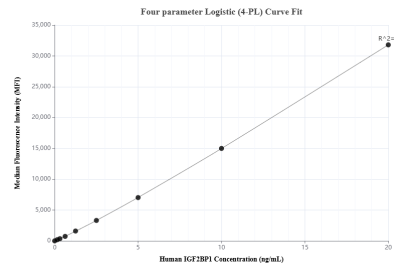
W: ptgcn.com

This product is exclusively available under Proteintech Group brand and is not available to purchase from any other manufacturer.

Selected Validation Data



The mean IGF2BP1 concentration was determined to be 54.8 ng/mL in HEK-293 cell extract based on a 1.0 mg/mL extract load, 51.5 ng/mL in Caco-2 cell extract based on a 1.0 mg/mL extract load, 2.0 ng/mL in BxPC-3 cell extract based on a 1.0 mg/mL extract load.



Cytometric bead array standard curve of MP03376-1, IGF2BP1 Recombinant Matched Antibody Pair, PBS Only. Capture antibody: 88123-2-PBS. Detection antibody: 88123-1-PBS. Standard: Ag18859. Range: 0.156-20 ng/mL.