

For Research Use Only

# PROK1 Recombinant monoclonal antibody, PBS Only (Detector)

Catalog Number: 88104-1-PBS



## Basic Information

<b>Catalog Number:</b> 88104-1-PBS	<b>GenBank Accession Number:</b> BC025399	<b>Purification Method:</b> Protein A purification
<b>Source:</b> Rabbit	<b>GeneID (NCBI):</b> 84432	<b>CloneNo.:</b> 260149G4
<b>Isotype:</b> IgG	<b>UNIPROT ID:</b> P58294	
<b>Immunogen Catalog Number:</b> EG5356	<b>Full Name:</b> prokineticin 1	
	<b>Calculated MW:</b> 12 kDa	

## Applications

**Tested Applications:**  
Sandwich ELISA, Indirect ELISA

**Species Specificity:**  
human

## Background Information

### Storage

**Storage:**  
Store at -80°C.  
**The product is shipped with ice packs. Upon receipt, store it immediately at -80°C**

**Storage Buffer:**  
PBS only, pH7.3

For technical support and original validation data for this product please contact:

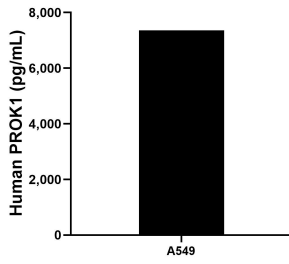
T: 4006900926

E: [Proteintech-CN@ptglab.com](mailto:Proteintech-CN@ptglab.com)

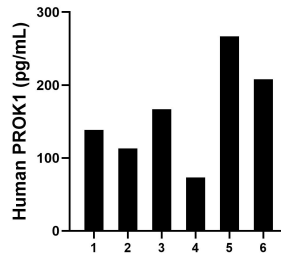
W: [ptgcn.com](http://ptgcn.com)

**This product is exclusively available under Proteintech Group brand and is not available to purchase from any other manufacturer.**

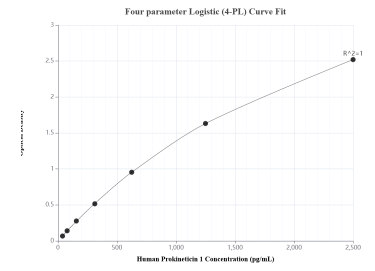
## Selected Validation Data



The mean Prokineticin 1 concentration was determined to be 7,360.8 pg/mL in A549 cell extract based on a 1.2 mg/mL extract load.



Plasma of six individual healthy human donors was measured. The human Prokineticin 1 concentration of detected samples was determined to be 161.0 pg/mL with a range of 73.4-266.7 pg/mL.



Sandwich ELISA standard curve of MP03323-1, Human Prokineticin 1 Recombinant Matched Antibody Pair - PBS only. 88104-2-PBS was coated to a plate as the capture antibody and incubated with serial dilutions of standard Eg5356. 88104-1-PBS was HRP conjugated as the detection antibody. Range: 39.1-2500 pg/mL