

For Research Use Only

RGS8 Recombinant monoclonal antibody, PBS Only (Capture)

Catalog Number: 88102-3-PBS



Basic Information

| | | |
|---|---|---|
| Catalog Number: 88102-3-PBS | GenBank Accession Number: BC069718 | Purification Method: Protein A purification |
| Source: Rabbit | GeneID (NCBI): 85397 | CloneNo.: 260122C12 |
| Isotype: IgG | UNIPROT ID: P57771 | |
| Immunogen Catalog Number: AG26535 | Full Name: regulator of G-protein signaling 8 | |
| | Calculated MW: 198 aa, 23 kDa | |

Applications

Tested Applications:
Cytometric bead array, Indirect ELISA

Species Specificity:
human

Background Information

Storage

Storage:
Store at -80°C.
The product is shipped with ice packs. Upon receipt, store it immediately at -80°C

Storage Buffer:
PBS only, pH7.3

For technical support and original validation data for this product please contact:

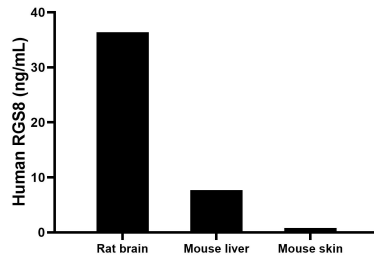
T: 4006900926

E: Proteintech-CN@ptglab.com

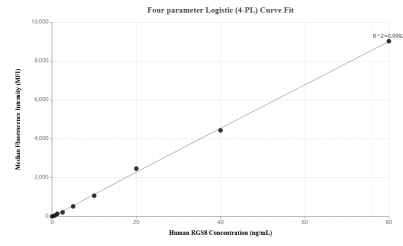
W: ptgcn.com

This product is exclusively available under Proteintech Group brand and is not available to purchase from any other manufacturer.

Selected Validation Data



The mean RGS8 concentration was determined to be 36.4 ng/mL in rat brain tissue extract based on a 1.0 mg/mL extract load, 7.7 ng/mL in mouse liver tissue extract based on a 1.0 mg/mL extract load, 0.8 ng/mL in mouse skin tissue extract based on a 1.0 mg/mL extract load.



Cytometric bead array standard curve of MP03353-1, RGS8 Recombinant Matched Antibody Pair, PBS Only. Capture antibody: 88102-3-PBS. Detection antibody: 88102-2-PBS. Standard: Ag26535. Range: 0.625-80 ng/mL