

For Research Use Only

CIDEB Recombinant monoclonal antibody

Catalog Number: 88087-1-RR



Basic Information

Catalog Number:

88087-1-RR

Source:

Rabbit

Isotype:

IgG

Immunogen Catalog Number:

AG27003

GenBank Accession Number:

BC035970

GeneID (NCBI):

27141

UNIPROT ID:

Q9UHD4

Full Name:

cell death-inducing DFFA-like effector b

Calculated MW:

219 aa, 28 kDa

Observed MW:

28 kDa

Purification Method:

Protein A purification

CloneNo.:

260294B2

Recommended Dilutions:

WB: 1:5000-1:50000

Applications

Tested Applications:

WB, ELISA

Species Specificity:

human, mouse, rat

Positive Controls:

WB: BxPC-3 cells, L02 cells, HuH-7 cells, HepG2 cells, RAW 264.7 cells, mouse liver tissue, rat liver tissue

Background Information

Cell death - inducing DFFA - like effector B (CIDEB), an ER and lipid droplet (LD) - associated protein primarily expressed in the liver, participated in lipid metabolism by regulating lipid droplet fusion and VLDL lipitation. Although CIDEB is expressed at high levels in brown adipose tissue (BAT) and CIDEB is highly enriched in white adipose tissue (WAT) and BAT, CIDEB is more abundant in liver, kidney, small intestine, and colon. CIDEB is localized to endoplasmic reticulum and lipid droplets. (PMID: 30858281, PMID: 24831470, PMID: 19187774)

Storage

Storage:

Store at -20°C. Stable for one year after shipment.

Storage Buffer:

PBS with 0.02% sodium azide and 50% glycerol, pH7.3

Aliquoting is unnecessary for -20°C storage

For technical support and original validation data for this product please contact:

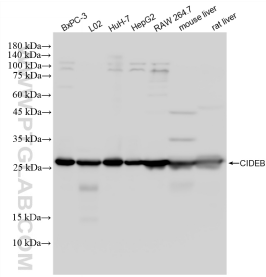
T: 4006900926

E: Proteintech-CN@ptglab.com

W: ptgcn.com

This product is exclusively available under Proteintech Group brand and is not available to purchase from any other manufacturer.

Selected Validation Data



Various lysates were subjected to SDS PAGE followed by western blot with 88087-1-RR (CIDEB antibody) at dilution of 1:10000 incubated at room temperature for 1.5 hours.