

For Research Use Only

# CIDEB Recombinant monoclonal antibody, PBS Only

Catalog Number: 88087-1-PBS



## Basic Information

<b>Catalog Number:</b> 88087-1-PBS	<b>GenBank Accession Number:</b> BC035970	<b>Purification Method:</b> Protein A purification
<b>Source:</b> Rabbit	<b>GeneID (NCBI):</b> 27141	<b>CloneNo.:</b> 260294B2
<b>Isotype:</b> IgG	<b>UNIPROT ID:</b> Q9UHD4	
<b>Immunogen Catalog Number:</b> AG27003	<b>Full Name:</b> cell death-inducing DFFA-like effector b	
	<b>Calculated MW:</b> 219 aa, 28 kDa	
	<b>Observed MW:</b> 28 kDa	

## Applications

**Tested Applications:**  
WB, Indirect ELISA

**Species Specificity:**  
human, mouse, rat

## Background Information

Cell death - inducing DFFA - like effector B (CIDEB), an ER and lipid droplet (LD) - associated protein primarily expressed in the liver, participated in lipid metabolism by regulating lipid droplet fusion and VLDL lipitation. Although CIDEA is expressed at high levels in brown adipose tissue (BAT) and CIDECE is highly enriched in white adipose tissue (WAT) and BAT, CIDEB is more abundant in liver, kidney, small intestine, and colon. CIDEB is localized to endoplasmic reticulum and lipid droplets. (PMID: 30858281, PMID: 24831470, PMID: 19187774)

## Storage

**Storage:**  
Store at -80°C.  
**The product is shipped with ice packs. Upon receipt, store it immediately at -80°C**

**Storage Buffer:**  
PBS only, pH7.3

For technical support and original validation data for this product please contact:

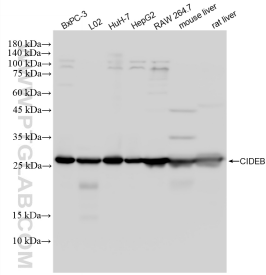
T: 4006900926

E: [Proteintech-CN@ptglab.com](mailto:Proteintech-CN@ptglab.com)

W: [ptgcn.com](http://ptgcn.com)

**This product is exclusively available under Proteintech Group brand and is not available to purchase from any other manufacturer.**

## Selected Validation Data



Various lysates were subjected to SDS PAGE followed by western blot with 88087-1-RR (CIDEB antibody) at dilution of 1:10000 incubated at room temperature for 1.5 hours. This data was developed using the same antibody clone with 88087-1-PBS in a different storage buffer formulation.