

For Research Use Only

# HHLA2 Recombinant monoclonal antibody, PBS Only (Detector)

Catalog Number: 88064-2-PBS



## Basic Information

<b>Catalog Number:</b> 88064-2-PBS	<b>GenBank Accession Number:</b> NM_007072	<b>Purification Method:</b> Protein A purification
<b>Source:</b> Rabbit	<b>GeneID (NCBI):</b> 11148	<b>CloneNo.:</b> 260180E1
<b>Isotype:</b> IgG	<b>UNIPROT ID:</b> Q9UM44-1	
<b>Immunogen Catalog Number:</b> EG5055	<b>Full Name:</b> HERV-H LTR-associating 2	
	<b>Calculated MW:</b> 414 aa, 47 kDa	

## Applications

**Tested Applications:**  
Cytometric bead array, Sandwich ELISA, Indirect ELISA

**Species Specificity:**  
human

## Background Information

### Storage

**Storage:**  
Store at -80°C.  
**The product is shipped with ice packs. Upon receipt, store it immediately at -80°C**

**Storage Buffer:**  
PBS only, pH7.3

For technical support and original validation data for this product please contact:

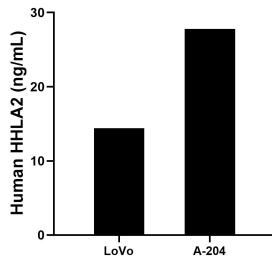
T: 4006900926

E: [Proteintech-CN@ptglab.com](mailto:Proteintech-CN@ptglab.com)

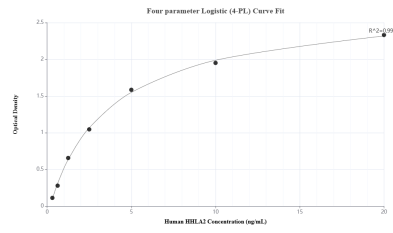
W: [ptgcn.com](http://ptgcn.com)

**This product is exclusively available under Proteintech Group brand and is not available to purchase from any other manufacturer.**

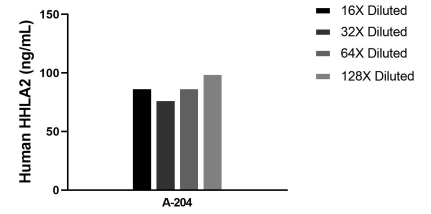
## Selected Validation Data



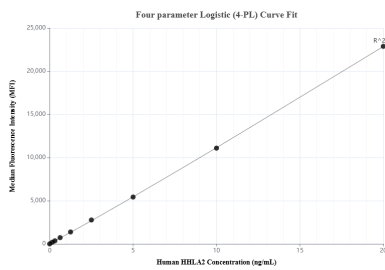
The mean HHLA2 concentration was determined to be 14.39 ng/mL in LoVo cell extract based on a 1.5 mg/mL extract load and 27.76 ng/mL in A-204 cell extract based on a 1.2 mg/mL extract load.



Sandwich ELISA standard curve of MP03313-2, Human HHLA2 Recombinant Matched Antibody Pair - PBS only. 88064-4-PBS was coated to a plate as the capture antibody and incubated with serial dilutions of standard Eg5055. 88064-2-PBS was HRP conjugated as the detection antibody. Range: 0.313-20 ng/mL



The mean HHLA2 concentration was determined to be 86.2 ng/mL in A-204 cell extract based on a 1.2 mg/mL extract load.



Cytometric bead array standard curve of MP03313-1, HHLA2 Recombinant Matched Antibody Pair, PBS Only. Capture antibody: 88064-3-PBS. Detection antibody: 88064-2-PBS. Standard: Eg5055. Range: 0.156-20 ng/mL