

For Research Use Only

# Mouse Prom1 Recombinant monoclonal antibody, PBS Only (Detector)

Catalog Number: 88061-2-PBS



## Basic Information

Catalog Number:

88061-2-PBS

Source:

Rabbit

Isotype:

IgG

GenBank Accession Number:

BC028286

GeneID (NCBI):

19126

UNIPROT ID:

O54990

Full Name:

prominin 1

Purification Method:

Protein A purification

CloneNo.:

253117D2

## Applications

Tested Applications:

Sandwich ELISA, Indirect ELISA

Species Specificity:

mouse

## Background Information

### Storage

Storage:

Store at -80°C.

**The product is shipped with ice packs. Upon receipt, store it immediately at -80°C**

Storage Buffer:

PBS only, pH7.3

For technical support and original validation data for this product please contact:

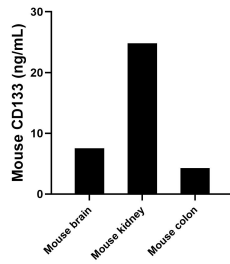
T: 4006900926

E: [Proteintech-CN@ptglab.com](mailto:Proteintech-CN@ptglab.com)

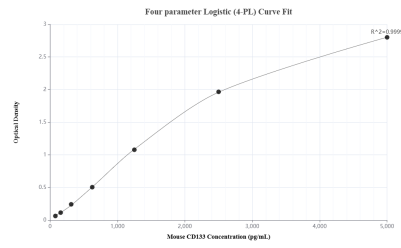
W: [ptgcn.com](http://ptgcn.com)

**This product is exclusively available under Proteintech Group brand and is not available to purchase from any other manufacturer.**

## Selected Validation Data



The mean CD133 concentration was determined to be 7.55 ng/mL in mouse brain tissue extract based on a 6.3 mg/mL extract load, 24.81 ng/mL in mouse kidney tissue extract based on a 8.5 mg/mL extract load and 4.29 ng/mL in mouse colon tissue extract based on a 4.9 mg/mL extract load.



Sandwich ELISA standard curve of MP03469-1, Mouse CD133 Recombinant Matched Antibody Pair - PBS only. 88061-3-PBS was coated to a plate as the capture antibody and incubated with serial dilutions of standard SY03044. 88061-2-PBS was HRP conjugated as the detection antibody. Range: 78.1-5000 pg/mL