

For Research Use Only

MITD1 Recombinant monoclonal antibody

Catalog Number: 88031-1-RR



Basic Information

Catalog Number: 88031-1-RR	GenBank Accession Number: BC018453	Purification Method: Protein A purification
Source: Rabbit	GeneID (NCBI): 129531	CloneNo.: 260134F6
Isotype: IgG	UNIPROT ID: Q8WV92	Recommended Dilutions: WB: 1:5000-1:50000
Immunogen Catalog Number: AG10998	Full Name: MIT, microtubule interacting and transport, domain containing 1	
	Calculated MW: 249 aa, 29 kDa	
	Observed MW: 29 kDa	

Applications

Tested Applications:
WB, ELISA

Species Specificity:
human, mouse, rat

Positive Controls:

WB : HeLa cells, HepG2 cells, Jurkat cells, MOLT-4 cells, U2OS cells, NIH/3T3 cells, HSC-T6 cells

Background Information

MITD1 (Microtubule Interacting and Trafficking Domain Containing 1) has a molecular weight of approximately 29.3 kDa and consists of 249 amino acids. Functionally, MITD1 regulates ESCRT-III activity and is required for efficient abscission at the end of cytokinesis. It functions as a homodimer, with its N-terminal MIT domain binding to a subset of ESCRT-III subunits and its C-terminal unanticipated phospholipase D-like (PLD) domain binding to membranes. Depletion of MITD1 causes cytokinetic defects, including midbody destabilization and abscission failure. Beyond its role in cell division, MITD1 has recently been identified as a brain-specific interferon-inducible factor that inhibits flavivirus replication.

Storage

Storage:
Store at -20°C. Stable for one year after shipment.

Storage Buffer:
PBS with 0.02% sodium azide and 50% glycerol, pH7.3

Aliquoting is unnecessary for -20°C storage

For technical support and original validation data for this product please contact:

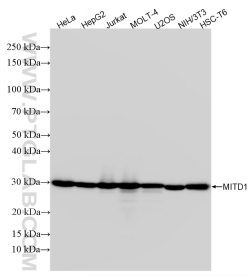
T: 4006900926

E: Proteintech-CN@ptglab.com

W: ptgcn.com

This product is exclusively available under Proteintech Group brand and is not available to purchase from any other manufacturer.

Selected Validation Data



Various lysates were subjected to SDS PAGE followed by western blot with 88031-1-RR (MITD1 antibody) at dilution of 1:10000 incubated at room temperature for 1.5 hours.