

For Research Use Only

Epha4 Recombinant monoclonal antibody

Catalog Number:88021-1-RR



Basic Information

Catalog Number:

88021-1-RR

Source:

Rabbit

Isotype:

IgG

Immunogen Catalog Number:

EG8776

GenBank Accession Number:

NM_007936.3

GeneID (NCBI):

13838

UNIPROT ID:

Q03137-1

Full Name:

Eph receptor A4

Calculated MW:

110 kDa

Observed MW:

120 kDa

Purification Method:

Protein A purification

CloneNo.:

260150A12

Recommended Dilutions:

WB: 1:500-1:2000

Applications

Tested Applications:

WB, ELISA

Species Specificity:

mouse, rat

Positive Controls:

WB : mouse brain tissue, rat brain tissue

Background Information

EPH receptor A4 (EPHA4) is a member of the Eph receptor family of receptor tyrosine kinases (RTKs) that interacts with both ephrin-A and ephrin-B ligands, making it one of the most versatile Eph receptors. In mice, Epha4 is highly expressed in the central nervous system, particularly during development, where it regulates axon guidance, neuronal pathfinding, synaptic plasticity, and neural circuit formation. EPHA4 mediates contact-dependent bidirectional signaling, often inducing cell repulsion and boundary formation, which is critical for proper tissue patterning. Beyond development, EPHA4 continues to function in the adult CNS, contributing to synaptic remodeling and neuronal regeneration responses.

Storage

Storage:

Store at -20°C. Stable for one year after shipment.

Storage Buffer:

PBS with 0.02% sodium azide and 50% glycerol, pH7.3

Aliquoting is unnecessary for -20°C storage

For technical support and original validation data for this product please contact:

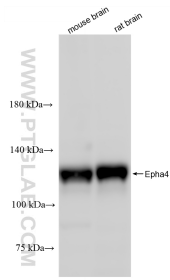
T: 4006900926

E: Proteintech-CN@ptglab.com

W: ptgcn.com

This product is exclusively available under Proteintech Group brand and is not available to purchase from any other manufacturer.

Selected Validation Data



Various lysates were subjected to SDS PAGE followed by western blot with 88021-1-RR (Epha4 antibody) at dilution of 1:1000 incubated at room temperature for 1.5 hours.