

For Research Use Only

# CXorf21 Recombinant monoclonal antibody, PBS Only

Catalog Number: 88004-1-PBS



## Basic Information

<b>Catalog Number:</b> 88004-1-PBS	<b>GenBank Accession Number:</b> BC020611	<b>Purification Method:</b> Protein A purification
<b>Source:</b> Rabbit	<b>GeneID (NCBI):</b> 80231	<b>CloneNo.:</b> 260203H7
<b>Isotype:</b> IgG	<b>UNIPROT ID:</b> Q9HAI6	
<b>Immunogen Catalog Number:</b> AG32773	<b>Full Name:</b> chromosome X open reading frame 21	
	<b>Observed MW:</b> 34 kDa	

## Applications

**Tested Applications:**  
WB, Indirect ELISA

**Species Specificity:**  
human, mouse

## Background Information

CXorf21 (Chromosome X open reading frame 21) is also named as TASL and TLR adapter interacting with SLC15A4 on the lysosome. CXorf21 is an innate immune adapter that mediates the recruitment and activation of IRF5 downstream of endolysosomal toll-like receptors TLR7, TLR8 and TLR9 (PMID:32433612). CXorf21 plays a role in the regulation of endolysosomal pH in immune cells such as B-cells, dendritic cells and monocytes (PMID: 31001245). CXorf21 is a mediator of the X-chromosome gene dose-dependent increased risk of SLE in females (PMID: 31695690).

## Storage

**Storage:**  
Store at -80°C.  
**The product is shipped with ice packs. Upon receipt, store it immediately at -80°C**

**Storage Buffer:**  
PBS only, pH7.3

For technical support and original validation data for this product please contact:

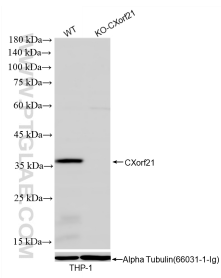
T: 4006900926

E: [Proteintech-CN@ptglab.com](mailto:Proteintech-CN@ptglab.com)

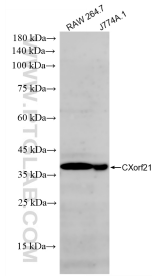
W: [ptgcn.com](http://ptgcn.com)

**This product is exclusively available under Proteintech Group brand and is not available to purchase from any other manufacturer.**

## Selected Validation Data



Various lysates were subjected to SDS PAGE followed by western blot with 88004-1-RR (CXorf21 antibody) at dilution of 1:2000 incubated at room temperature for 1.5 hours. This data was developed using the same antibody clone with 88004-1-PBS in a different storage buffer formulation.



Various lysates were subjected to SDS PAGE followed by western blot with 88004-1-RR (CXorf21 antibody) at dilution of 1:2000 incubated at room temperature for 1.5 hours. This data was developed using the same antibody clone with 88004-1-PBS in a different storage buffer formulation.