

For Research Use Only

# Ephrin B2 Recombinant monoclonal antibody, PBS Only

Catalog Number:87995-1-PBS



## Basic Information

<b>Catalog Number:</b> 87995-1-PBS	<b>GenBank Accession Number:</b> BC074856	<b>Purification Method:</b> Protein A purification
<b>Source:</b> Rabbit	<b>GeneID (NCBI):</b> 1948	<b>CloneNo.:</b> 253599B5
<b>Isotype:</b> IgG	<b>UNIPROT ID:</b> P52799	
<b>Immunogen Catalog Number:</b> AG24865	<b>Full Name:</b> ephrin-B2	
	<b>Calculated MW:</b> 333 aa, 37 kDa	
	<b>Observed MW:</b> 47-50 kDa	

## Applications

**Tested Applications:**  
WB, Indirect ELISA

**Species Specificity:**  
human, mouse

## Background Information

Ephrin B2 (EFNB2) is a transmembrane ligand for the Ephrin B class (EPHB) of receptor tyrosine kinases. EPHB receptor(EPHB1-EPHB4, EPH6) are located at the member of one cell and activated by binding EFNB protein located on another cell, resulting in a bidirectional Ephrin-EphR signaling (PMID: 26790531). Ephrin-B are involved in vasculogenesis, neural development and synaptic plasticity, and in pathological processes such as cancer or neurodegeneration (PMID:29508392). The calculated molecular weight of EFNB2 is 37 kDa, and there is also detected about 50 kDa band in the article (PMID: 27650867, PMID: 23492730).

## Storage

**Storage:**  
Store at -80°C.  
**The product is shipped with ice packs. Upon receipt, store it immediately at -80°C**

**Storage Buffer:**  
PBS only, pH7.3

For technical support and original validation data for this product please contact:

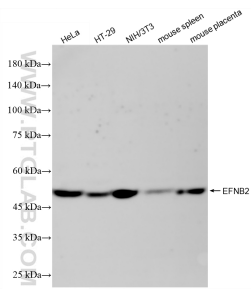
T: 4006900926

E: Proteintech-CN@ptglab.com

W: ptgcn.com

**This product is exclusively available under Proteintech Group brand and is not available to purchase from any other manufacturer.**

## Selected Validation Data



Various lysates were subjected to SDS PAGE followed by western blot with 87995-1-RR (EFNB2 antibody) at dilution of 1:5000 incubated at room temperature for 1.5 hours. This data was developed using the same antibody clone with 87995-1-PBS in a different storage buffer formulation.