

For Research Use Only

# MTA1 Recombinant monoclonal antibody, PBS Only

Catalog Number: 87979-1-PBS



## Basic Information

<b>Catalog Number:</b> 87979-1-PBS	<b>GenBank Accession Number:</b> NM_004689	<b>Purification Method:</b> Protein A purification
<b>Source:</b> Rabbit	<b>GeneID (NCBI):</b> 9112	<b>CloneNo.:</b> 253519C10
<b>Isotype:</b> IgG	<b>UNIPROT ID:</b> Q13330	
<b>Immunogen Catalog Number:</b> AG30994	<b>Full Name:</b> metastasis associated 1	
	<b>Calculated MW:</b> 81 kDa	
	<b>Observed MW:</b> 70-80 kDa	

## Applications

**Tested Applications:**  
WB, IF/ICC, Indirect ELISA

**Species Specificity:**  
human, mouse

## Background Information

Metastasis-associated protein 1 (MTA1) is a member of the MTA family, which is involved in regulating DNA-based biological processes (PMID: 25332144). MTA1 is an integral part of the nucleosome remodeling histone deacetylase complex (NuRD complex) and regulates nucleosome remodeling and deacetylation by stabilizing the NuRD complex and related proteins (PMID: 12419236). MTA1 expression is associated with tumor malignancy in several cancers.

## Storage

**Storage:**  
Store at -80°C.  
**The product is shipped with ice packs. Upon receipt, store it immediately at -80°C**

**Storage Buffer:**  
PBS only, pH7.3

For technical support and original validation data for this product please contact:

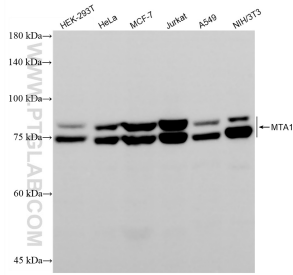
T: 4006900926

E: [Proteintech-CN@ptglab.com](mailto:Proteintech-CN@ptglab.com)

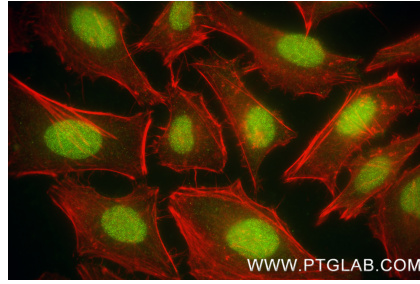
W: [ptgcn.com](http://ptgcn.com)

**This product is exclusively available under Proteintech Group brand and is not available to purchase from any other manufacturer.**

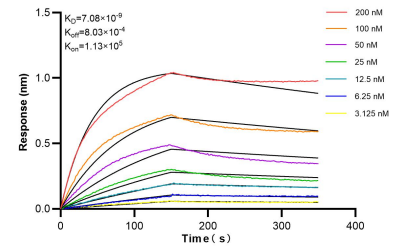
## Selected Validation Data



Various lysates were subjected to SDS PAGE followed by western blot with 87979-1-RR (MTA1 antibody) at dilution of 1:5000 incubated at room temperature for 1.5 hours. This data was developed using the same antibody clone with 87979-1-PBS in a different storage buffer formulation.



Immunofluorescent analysis of (4% PFA) fixed HeLa cells using MTA1 antibody (87979-1-RR, Clone: 253519C10) at dilution of 1:500 and CoraLite® 488-Conjugated Goat Anti-Rabbit IgG(H+L) (SA00013-2). This data was developed using the same antibody clone with 87979-1-PBS in a different storage buffer formulation.



Biolayer interferometry (BLI) kinetic assays of 87979-1-RR against Human MTA1 were performed. The affinity constant is 7.08 nM.