

For Research Use Only

Mouse Epha7 Recombinant monoclonal antibody, PBS Only

Catalog Number:87966-1-PBS



Basic Information

Catalog Number: 87966-1-PBS	GenBank Accession Number: NM_010141.4	Purification Method: Protein A purification
Source: Rabbit	GeneID (NCBI): 13841	CloneNo.: 253531B5
Isotype: IgG	UNIPROT ID: Q61772-1	
Immunogen Catalog Number: EG8773	Full Name: Eph receptor A7	
	Calculated MW: 112 kDa	
	Observed MW: 75 kDa, 120 kDa	

Applications

Tested Applications:
WB, Indirect ELISA

Species Specificity:
mouse

Background Information

EPH receptor A7 (EPHA7) is a member of the Eph receptor family of receptor tyrosine kinases (RTKs) that mediates contact-dependent cell-cell communication through binding to ephrin-A ligands. In mice, Epha7 is prominently expressed during embryonic development, particularly in the central nervous system, where it regulates axon guidance, neuronal connectivity, cortical patterning, and cell positioning. EPHA7 signaling can induce cell repulsion, boundary formation, and apoptosis, contributing to proper tissue organization. In addition to developmental roles, Epha7 is also detected in selected adult tissues, including brain and lymphoid compartments, although at lower levels. Functionally, EPHA7 has been implicated in neurodevelopmental processes, synaptic organization, and tissue morphogenesis. Emerging evidence suggests roles in tumor biology, where EPHA7 may act as a tumor suppressor or context-dependent regulator of cell proliferation and survival. Due to its involvement in developmental signaling and disease, EPHA7 is of interest in neuroscience, developmental biology, and cancer research.

Storage

Storage:
Store at -80°C.
The product is shipped with ice packs. Upon receipt, store it immediately at -80°C

Storage Buffer:
PBS only, pH7.3

For technical support and original validation data for this product please contact:

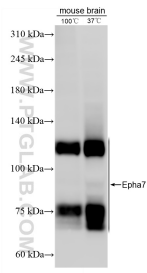
T: 4006900926

E: Proteintech-CN@ptglab.com

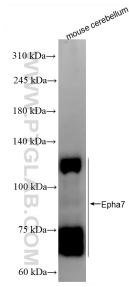
W: ptgcn.com

This product is exclusively available under Proteintech Group brand and is not available to purchase from any other manufacturer.

Selected Validation Data



Various lysates were subjected to SDS PAGE followed by western blot with 87966-1-RR (Epha7 antibody) at dilution of 1:5000 incubated at room temperature for 1.5 hours. This data was developed using the same antibody clone with 87966-1-PBS in a different storage buffer formulation.



Various lysates were subjected to SDS PAGE followed by western blot with 87966-1-RR (Epha7 antibody) at dilution of 1:5000 incubated at room temperature for 1.5 hours. This data was developed using the same antibody clone with 87966-1-PBS in a different storage buffer formulation.