

For Research Use Only

# ADI1 Recombinant monoclonal antibody, PBS Only

Catalog Number:87964-1-PBS



## Basic Information

<b>Catalog Number:</b> 87964-1-PBS	<b>GenBank Accession Number:</b> NM_018269.3	<b>Purification Method:</b> Protein A purification
<b>Source:</b> Rabbit	<b>GeneID (NCBI):</b> 55256	<b>CloneNo.:</b> 260044G10
<b>Isotype:</b> IgG	<b>UNIPROT ID:</b> Q9BV57-1	
<b>Immunogen Catalog Number:</b> EG5924	<b>Full Name:</b> acireductone dioxygenase 1	
	<b>Calculated MW:</b> 21 kDa	
	<b>Observed MW:</b> 20 kDa	

## Applications

**Tested Applications:**  
WB, Indirect ELISA

**Species Specificity:**  
human

## Background Information

ADI1(acireductone dioxygenase 1 ) is also named as SIPL, ARD, APL1, HMFT1638, MTCBP-1, FLJ10913, MTCBP1 and belongs to the acireductone dioxygenase (ARD) family. It catalyzes the formation of formate and 2-keto-4-methylthiobutyrate (KMTB) from 1,2-dihydroxy-3-keto-5-methylthiopentene (DHK-MTPene).The downregulation of ADI1 protein expression in human prostate cancer specimens argues that ADI1 potentially inhibits the growth that occurs during prostate cancer progression(PMID:17786183).

## Storage

**Storage:**  
Store at -80°C.  
**The product is shipped with ice packs. Upon receipt, store it immediately at -80°C**

**Storage Buffer:**  
PBS only, pH7.3

For technical support and original validation data for this product please contact:

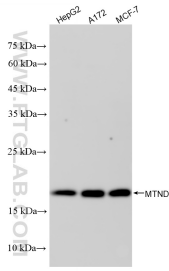
T: 4006900926

E: Proteintech-CN@ptglab.com

W: ptgcn.com

**This product is exclusively available under Proteintech Group brand and is not available to purchase from any other manufacturer.**

## Selected Validation Data



Various lysates were subjected to SDS PAGE followed by western blot with 87964-1-RR (AD11 antibody) at dilution of 1:4000 incubated at room temperature for 1.5 hours. This data was developed using the same antibody clone with 87964-1-PBS in a different storage buffer formulation.