

For Research Use Only

# PSME2 Recombinant monoclonal antibody

Catalog Number: 87958-1-RR



## Basic Information

<b>Catalog Number:</b> 87958-1-RR	<b>GenBank Accession Number:</b> BC019885	<b>Purification Method:</b> Protein A purification
<b>Source:</b> Rabbit	<b>GeneID (NCBI):</b> 5721	<b>CloneNo.:</b> 253556B5
<b>Isotype:</b> IgG	<b>UNIPROT ID:</b> Q9UL46	<b>Recommended Dilutions:</b> WB: 1:5000-1:50000 IHC: 1:500-1:2000
<b>Immunogen Catalog Number:</b> AG3986	<b>Full Name:</b> proteasome (prosome, macropain) activator subunit 2 (PA28 beta)	
	<b>Calculated MW:</b> 239 aa, 27 kDa	
	<b>Observed MW:</b> 27 kDa	

## Applications

### Tested Applications:

WB, IHC, ELISA

### Species Specificity:

human, mouse, rat

**Note-IHC: suggested antigen retrieval with TE buffer pH 9.0; (\*) Alternatively, antigen retrieval may be performed with citrate buffer pH 6.0**

### Positive Controls:

**WB:** HeLa cells, PC-3 cells, HepG2 cells, MCF-7 cells, 4T1 cells, Neuro-2a cells, PC-12 cells

**IHC:** rat liver tissue, mouse liver tissue

## Background Information

The principal function of the proteasome is targeted degradation of intracellular proteins. Activity of the 20S proteasome is controlled by regulatory complexes that bind to the ends of the cylindrical proteasome. 11S regulator (REG or PA28), is a complex of 28 kDa subunits that is thought to activate proteasomes toward the production of antigenic peptides. Human PSME1 and PSME2 genes encode the two proteasome activators PA28 alpha and beta, respectively, which have been implicated in antigen processing for loading class I MHC molecules. The PA28 activator complex enhances the generation of class I binding peptides by altering the cleavage pattern of the proteasome.

## Storage

### Storage:

Store at -20°C. Stable for one year after shipment.

### Storage Buffer:

PBS with 0.02% sodium azide and 50% glycerol, pH7.3

Aliquoting is unnecessary for -20°C storage

For technical support and original validation data for this product please contact:

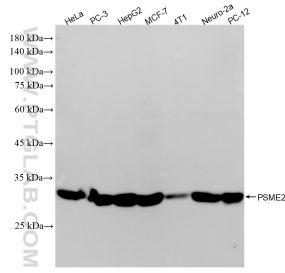
T: 4006900926

E: [Proteintech-CN@ptglab.com](mailto:Proteintech-CN@ptglab.com)

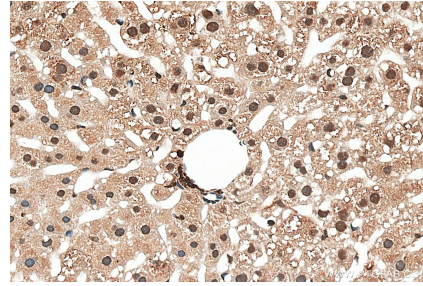
W: [ptgcn.com](http://ptgcn.com)

**This product is exclusively available under Proteintech Group brand and is not available to purchase from any other manufacturer.**

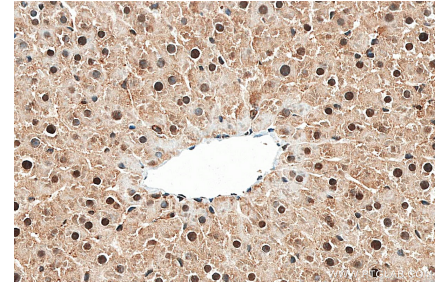
## Selected Validation Data



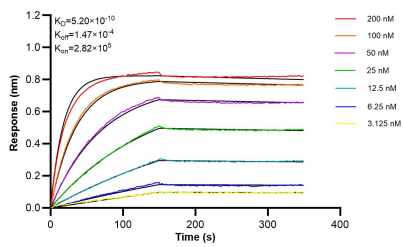
Various lysates were subjected to SDS PAGE followed by western blot with 87958-1-RR (PSME2 antibody) at dilution of 1:10000 incubated at room temperature for 1.5 hours.



Immunohistochemical analysis of paraffin-embedded mouse liver tissue slide using 87958-1-RR (PSME2 antibody) at dilution of 1:1000 (under 40x lens). Heat mediated antigen retrieval with Tris-EDTA buffer (pH 9.0).



Immunohistochemical analysis of paraffin-embedded rat liver tissue slide using 87958-1-RR (PSME2 antibody) at dilution of 1:1000 (under 40x lens). Heat mediated antigen retrieval with Tris-EDTA buffer (pH 9.0).



Biolayer interferometry (BLI) kinetic assays of 87958-1-RR against Human PSME2 were performed. The affinity constant is 0.52 nM.