

For Research Use Only

# PSG7 Recombinant monoclonal antibody, PBS Only (Capture)

Catalog Number:87954-2-PBS



## Basic Information

<b>Catalog Number:</b> 87954-2-PBS	<b>GenBank Accession Number:</b> NM_002783.3	<b>Purification Method:</b> Protein A purification
<b>Source:</b> Rabbit	<b>GeneID (NCBI):</b> 5676	<b>CloneNo.:</b> 260017B1
<b>Isotype:</b> IgG	<b>UNIPROT ID:</b> Q13046	
<b>Immunogen Catalog Number:</b> EG8784	<b>Full Name:</b> pregnancy specific beta-1-glycoprotein 7	
	<b>Calculated MW:</b> 47 kDa	

## Applications

**Tested Applications:**  
Cytometric bead array, Indirect ELISA

**Species Specificity:**  
human

## Background Information

### Storage

**Storage:**  
Store at -80°C.  
**The product is shipped with ice packs. Upon receipt, store it immediately at -80°C**

**Storage Buffer:**  
PBS only, pH7.3

For technical support and original validation data for this product please contact:

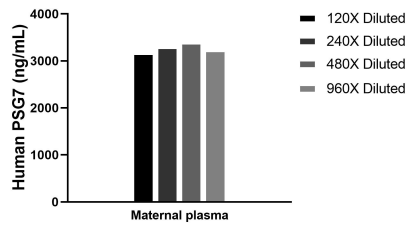
T: 4006900926

E: Proteintech-CN@ptglab.com

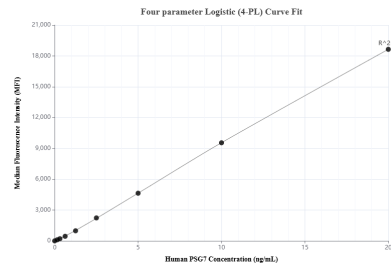
W: ptgcn.com

**This product is exclusively available under Proteintech Group brand and is not available to purchase from any other manufacturer.**

## Selected Validation Data



The mean PSG7 concentration was determined to be 3262.7 ng/mL in maternal plasma.



Cytometric bead array standard curve of MP03280-1, PSG7 Recombinant Matched Antibody Pair, PBS Only. Capture antibody: 87954-2-PBS. Detection antibody: 87954-1-PBS. Standard: Eg8784. Range: 0.156-20 ng/mL.