

For Research Use Only

PSG2 Recombinant monoclonal antibody, PBS Only (Detector)

Catalog Number: 87951-1-PBS



Basic Information

Catalog Number: 87951-1-PBS	GenBank Accession Number: NM_031246.4	Purification Method: Protein A purification
Source: Rabbit	GeneID (NCBI): 5670	CloneNo.: 260011D8
Isotype: IgG	UNIPROT ID: P11465	
Immunogen Catalog Number: EG8789	Full Name: pregnancy specific beta-1-glycoprotein 2	
	Calculated MW: 37 kDa	

Applications

Tested Applications:
Cytometric bead array, Indirect ELISA

Species Specificity:
human

Background Information

Storage

Storage:
Store at -80°C.
The product is shipped with ice packs. Upon receipt, store it immediately at -80°C

Storage Buffer:
PBS only, pH7.3

For technical support and original validation data for this product please contact:

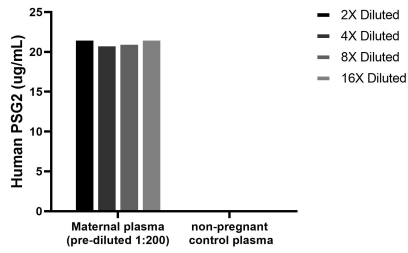
T: 4006900926

E: Proteintech-CN@ptglab.com

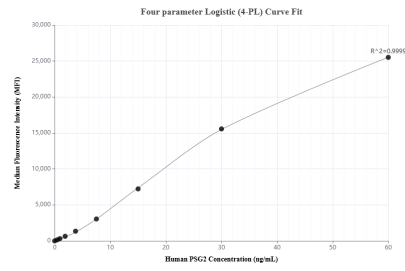
W: ptgcn.com

This product is exclusively available under Proteintech Group brand and is not available to purchase from any other manufacturer.

Selected Validation Data



The mean PSG2 concentration was determined to be 21.4 ug/mL in maternal plasma, non-pregnant plasma were served as a negative control.



Cytometric bead array standard curve of MP03302-1, PSG2 Recombinant Matched Antibody Pair, PBS Only. Capture antibody: 87951-2-PBS. Detection antibody: 87951-1-PBS. Standard: Eg8789. Range: 0.469-60 ng/mL.