

For Research Use Only

CCDC88C Recombinant monoclonal antibody, PBS Only (Detector)

Catalog Number: 87946-2-PBS



Basic Information

Catalog Number: 87946-2-PBS	GenBank Accession Number: BC028565	Purification Method: Protein A purification
Source: Rabbit	GeneID (NCBI): 440193	CloneNo.: 260135A11
Isotype: IgG	UNIPROT ID: Q9P219	
Immunogen Catalog Number: AG22711	Full Name: coiled-coil domain containing 88C	
	Calculated MW: 2028 aa, 228 kDa	

Applications

Tested Applications:
Cytometric bead array, Indirect ELISA

Species Specificity:
human

Background Information

Storage

Storage:
Store at -80°C.
The product is shipped with ice packs. Upon receipt, store it immediately at -80°C

Storage Buffer:
PBS only, pH7.3

For technical support and original validation data for this product please contact:

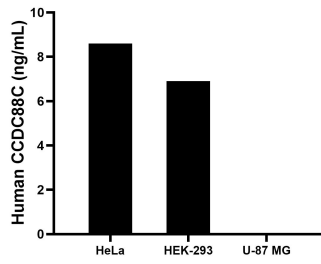
T: 4006900926

E: Proteintech-CN@ptglab.com

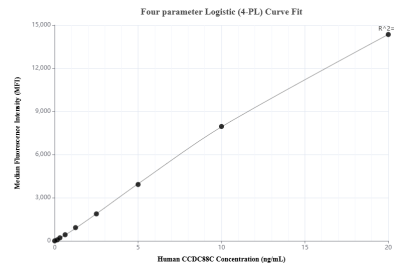
W: ptgcn.com

This product is exclusively available under Proteintech Group brand and is not available to purchase from any other manufacturer.

Selected Validation Data



The mean CCDC88C concentration was determined to be 8.6 ng/mL in HeLa cell extract based on a 1.2 mg/mL extract load, 6.9 ng/mL in HEK-293 cell extract based on a 1.5 mg/mL extract load, U-87 MG cell extract were served as a negative control.



Cytometric bead array standard curve of MP03275-1, CCDC88C Recombinant Matched Antibody Pair, PBS Only. Capture antibody: 87946-3-PBS. Detection antibody: 87946-2-PBS. Standard: Ag22711. Range: 0.156-20 ng/mL.