

For Research Use Only

INSL4 Recombinant monoclonal antibody, PBS Only (Capture)

Catalog Number: 87930-2-PBS



Basic Information

Catalog Number: 87930-2-PBS	GenBank Accession Number: NM_002195.1	Purification Method: Protein A purification
Source: Rabbit	GeneID (NCBI): 3641	CloneNo.: 260101D12
Isotype: IgG	UNIPROT ID: Q14641	
Immunogen Catalog Number: EG2884	Full Name: insulin-like 4 (placenta)	
	Calculated MW: 15 kDa	

Applications

Tested Applications:
Cytometric bead array, Indirect ELISA

Species Specificity:
human

Background Information

Storage

Storage:
Store at -80°C.
The product is shipped with ice packs. Upon receipt, store it immediately at -80°C

Storage Buffer:
PBS only, pH7.3

For technical support and original validation data for this product please contact:

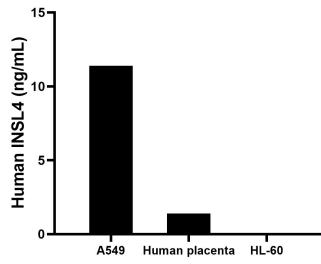
T: 4006900926

E: Proteintech-CN@ptglab.com

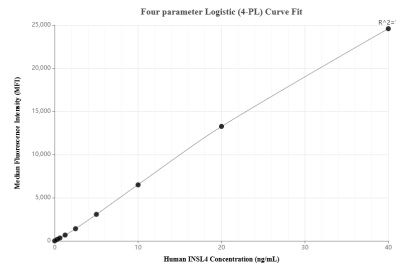
W: ptgcn.com

This product is exclusively available under Proteintech Group brand and is not available to purchase from any other manufacturer.

Selected Validation Data



The mean INSL4 concentration was determined to be 11.4 ng/mL in A549 cell extract based on a 1.2 mg/mL extract load, 1.4 ng/mL in human placenta cell extract based on a 2.9 mg/mL extract load, HL-60 cell extract were served as a negative control.



Cytometric bead array standard curve of MP03266-1, INSL4 Recombinant Matched Antibody Pair, PBS Only. Capture antibody: 87930-2-PBS. Detection antibody: 87930-1-PBS. Standard: Eg2884. Range: 0.312-40 ng/mL.