

For Research Use Only

SEC62 Recombinant monoclonal antibody

Catalog Number:87925-1-RR



Basic Information

Catalog Number: 87925-1-RR	GenBank Accession Number: NM_003262	Purification Method: Protein A purification
Source: Rabbit	GeneID (NCBI): 7095	CloneNo.: 253590D1
Isotype: IgG	UNIPROT ID: Q99442	Recommended Dilutions: WB: 1:5000-1:50000 IF/ICC: 1:200-1:800
Immunogen Catalog Number: AG29932	Full Name: SEC62 homolog (S. cerevisiae)	
	Calculated MW: 46 kDa	
	Observed MW: 52 kDa	

Applications

Tested Applications: WB, IF/ICC, ELISA	Positive Controls:
Species Specificity: human, mouse, rat	WB : LoVo cells, SW480 cells, SKOV-3 cells, SK-BR-3 cells, NIH/3T3 cells, C6 cells
	IF/ICC : HeLa cells,

Background Information

SEC62 is an integral endoplasmic reticulum (ER) membrane protein. SEC62 and SEC63 form a dimeric complex and play a central role in the translocation of nascent and newly synthesized precursor polypeptides into the ER. SEC62 is associated with poor prognosis in a variety of tumors, such as prostate cancer, hepatocellular cancer, breast cancer, melanoma, and colorectal cancer (PMID: 36262254).

Storage

Storage:
Store at -20°C. Stable for one year after shipment.
Storage Buffer:
PBS with 0.02% sodium azide and 50% glycerol, pH7.3
Aliquoting is unnecessary for -20°C storage

For technical support and original validation data for this product please contact:

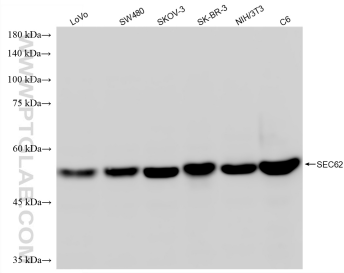
T: 4006900926

E: Proteintech-CN@ptglab.com

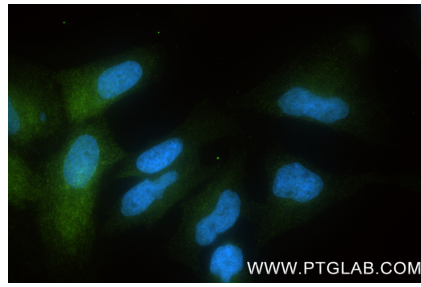
W: ptgcn.com

This product is exclusively available under Proteintech Group brand and is not available to purchase from any other manufacturer.

Selected Validation Data



Various lysates were subjected to SDS PAGE followed by western blot with 87925-1-RR (SEC62 antibody) at dilution of 1:10000 incubated at room temperature for 1.5 hours.



Immunofluorescent analysis of (4% PFA) fixed HeLa cells using SEC62 antibody (87925-1-RR, Clone: 253590D1) at dilution of 1:400 and CoraLite® 488-Conjugated Goat Anti-Rabbit IgG(H+L) (SA00013-2).