

For Research Use Only

SEC62 Recombinant monoclonal antibody, PBS Only

Catalog Number:87925-1-PBS



Basic Information

Catalog Number: 87925-1-PBS	GenBank Accession Number: NM_003262	Purification Method: Protein A purification
Source: Rabbit	GeneID (NCBI): 7095	CloneNo.: 253590D1
Isotype: IgG	UNIPROT ID: Q99442	
Immunogen Catalog Number: AG29932	Full Name: SEC62 homolog (S. cerevisiae)	
	Calculated MW: 46 kDa	
	Observed MW: 52 kDa	

Applications

Tested Applications:
WB, IF/ICC, Indirect ELISA

Species Specificity:
human, mouse, rat

Background Information

SEC62 is an integral endoplasmic reticulum (ER) membrane protein. SEC62 and SEC63 form a dimeric complex and play a central role in the translocation of nascent and newly synthesized precursor polypeptides into the ER. SEC62 is associated with poor prognosis in a variety of tumors, such as prostate cancer, hepatocellular cancer, breast cancer, melanoma, and colorectal cancer (PMID: 36262254).

Storage

Storage:
Store at -80°C.
The product is shipped with ice packs. Upon receipt, store it immediately at -80°C

Storage Buffer:
PBS only, pH7.3

For technical support and original validation data for this product please contact:

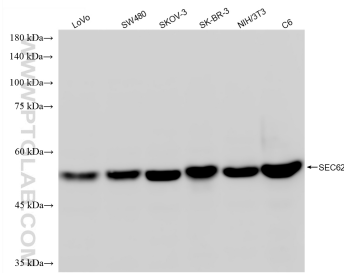
T: 4006900926

E: Proteintech-CN@ptglab.com

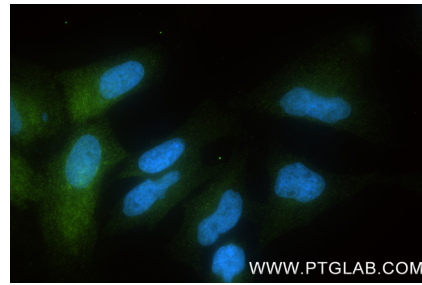
W: ptgcn.com

This product is exclusively available under Proteintech Group brand and is not available to purchase from any other manufacturer.

Selected Validation Data



Various lysates were subjected to SDS PAGE followed by western blot with 87925-1-RR (SEC62 antibody) at dilution of 1:10000 incubated at room temperature for 1.5 hours. This data was developed using the same antibody clone with 87925-1-PBS in a different storage buffer formulation.



Immunofluorescent analysis of (4% PFA) fixed HeLa cells using SEC62 antibody (87925-1-RR, Clone: 253590D1) at dilution of 1:400 and CoraLite® 488-Conjugated Goat Anti-Rabbit IgG(H+L) (SA00013-2). This data was developed using the same antibody clone with 87925-1-PBS in a different storage buffer formulation.