

For Research Use Only

Mouse SEZ6L Recombinant monoclonal antibody, PBS Only

Catalog Number:87923-1-PBS



Basic Information

Catalog Number: 87923-1-PBS	GenBank Accession Number: NM_001253916.2	Purification Method: Protein A purification
Source: Rabbit	GeneID (NCBI): 56747	CloneNo.: 260140D4
Isotype: IgG	UNIPROT ID: Q6P1D5-1	
Immunogen Catalog Number: EG9193	Full Name: seizure related 6 homolog like	
	Calculated MW: 105 kDa	
	Observed MW: 150-200 kDa	

Applications

Tested Applications:
WB, IF-P, Indirect ELISA

Species Specificity:
mouse, rat

Background Information

The BSRPs (brain-specific receptor-like proteins) were predominantly expressed in the soma and dendrites of neurons and localized in the endoplasmic reticulum (ER). Seizure 6-like protein (SEZ6L, also known as BSRP-B) is a member of the BSRP family. It is a candidate tumor suppressor gene and may contribute to specialized endoplasmic reticulum functions in neurons (PMID: 16814779). The observed molecular weight of SEZ6L is higher than its calculated one, because of N-glycosylation (PMID: 27716410).

Storage

Storage:
Store at -80°C.
The product is shipped with ice packs. Upon receipt, store it immediately at -80°C

Storage Buffer:
PBS only, pH7.3

For technical support and original validation data for this product please contact:

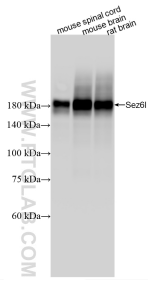
T: 4006900926

E: Proteintech-CN@ptglab.com

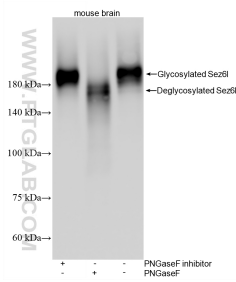
W: ptgcn.com

This product is exclusively available under Proteintech Group brand and is not available to purchase from any other manufacturer.

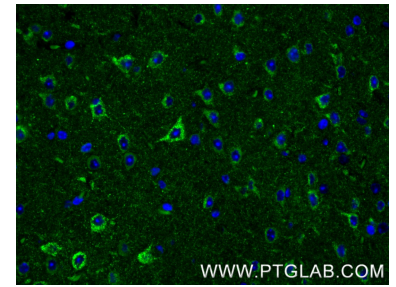
Selected Validation Data



Various lysates were subjected to SDS PAGE followed by western blot with 87923-1-RR (Sez6l antibody) at dilution of 1:20000 incubated at room temperature for 1.5 hours. This data was developed using the same antibody clone with 87923-1-PBS in a different storage buffer formulation.



Various lysates were subjected to SDS PAGE followed by western blot with 87923-1-RR (SEZ6L antibody) at dilution of 1:40000 incubated at room temperature for 1.5 hours. This data was developed using the same antibody clone with 87923-1-PBS in a different storage buffer formulation.



Immunofluorescent analysis of (4% PFA) fixed paraffin-embedded mouse brain tissue using SEZ6L antibody (87923-1-RR, Clone: 260140D4) at dilution of 1:1000 and CoraLite®488-Conjugated Goat Anti-Rabbit IgG(H+L) (SA00013-2). Heat mediated antigen retrieval with Tris-EDTA buffer (pH 9.0). This data was developed using the same antibody clone with 87923-1-PBS in a different storage buffer formulation.