

For Research Use Only

PPP1R2 Recombinant monoclonal antibody

Catalog Number:87916-1-RR



Basic Information

Catalog Number: 87916-1-RR	GenBank Accession Number: BC007655	Purification Method: Protein A purification
Source: Rabbit	GeneID (NCBI): 5504	CloneNo.: 253579H6
Isotype: IgG	UNIPROT ID: P41236	Recommended Dilutions: WB: 1:500-1:2000
Immunogen Catalog Number: AG0805	Full Name: protein phosphatase 1, regulatory (inhibitor) subunit 2	
	Calculated MW: 23 kDa	
	Observed MW: 30 kDa	

Applications

Tested Applications: WB, ELISA	Positive Controls: WB : HeLa cells, Jurkat cells, MCF-7 cells, Ramos cells, U266 cells
Species Specificity: human	

Background Information

PPP1R2 (PHOSPHATASE INHIBITOR 2) forms heterodimer with phosphatase type-1 (PP1). Activity of the complex can be regulated by a series of phosphorylations/ phosphorilations events on PPP1R2, functioning in some important process in vivo.

Storage

Storage:
Store at -20°C. Stable for one year after shipment.
Storage Buffer:
PBS with 0.02% sodium azide and 50% glycerol, pH7.3
Aliquoting is unnecessary for -20°C storage

For technical support and original validation data for this product please contact:

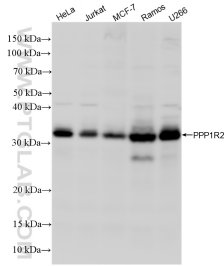
T: 4006900926

E: Proteintech-CN@ptglab.com

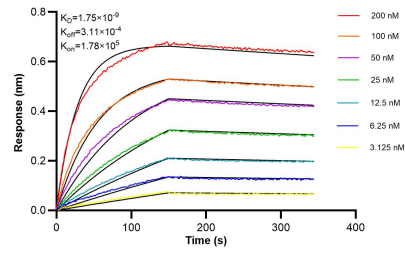
W: ptgcn.com

This product is exclusively available under Proteintech Group brand and is not available to purchase from any other manufacturer.

Selected Validation Data



Various lysates were subjected to SDS PAGE followed by western blot with 87916-1-RR (PPP1R2 antibody) at dilution of 1:1000 incubated at room temperature for 1.5 hours.



Biolayer interferometry (BLI) kinetic assays of 87916-1-RR against Human PPP1R2 were performed. The affinity constant is 1.75 nM.