

For Research Use Only

# PPP1R2 Recombinant monoclonal antibody, PBS Only (Capture)

Catalog Number: 87916-1-PBS



## Basic Information

<b>Catalog Number:</b> 87916-1-PBS	<b>GenBank Accession Number:</b> BC007655	<b>Purification Method:</b> Protein A purification
<b>Source:</b> Rabbit	<b>GeneID (NCBI):</b> 5504	<b>CloneNo.:</b> 253579H6
<b>Isotype:</b> IgG	<b>UNIPROT ID:</b> P41236	
<b>Immunogen Catalog Number:</b> AG0805	<b>Full Name:</b> protein phosphatase 1, regulatory (inhibitor) subunit 2	
	<b>Calculated MW:</b> 23 kDa	
	<b>Observed MW:</b> 30 kDa	

## Applications

**Tested Applications:**  
WB, Cytometric bead array, Indirect ELISA

**Species Specificity:**  
human

## Background Information

PPP1R2 (PHOSPHATASE INHIBITOR 2) forms heterodimer with phosphatase type-1 (PP1). Activity of the complex can be regulated by a series of phosphorylations/ phosphoroylations events on PPP1R2, functioning in some important process in vivo.

## Storage

**Storage:**  
Store at -80°C.  
**The product is shipped with ice packs. Upon receipt, store it immediately at -80°C**

**Storage Buffer:**  
PBS only, pH7.3

For technical support and original validation data for this product please contact:

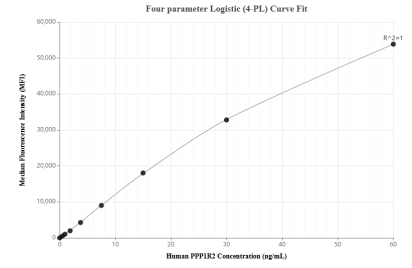
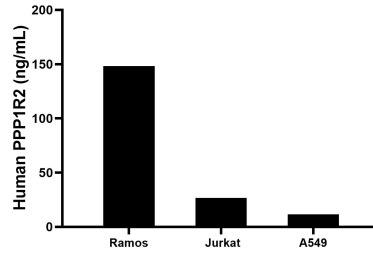
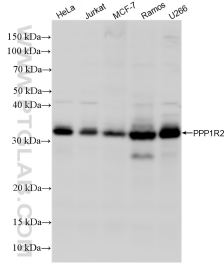
T: 4006900926

E: [Proteintech-CN@ptglab.com](mailto:Proteintech-CN@ptglab.com)

W: [ptgcn.com](http://ptgcn.com)

**This product is exclusively available under Proteintech Group brand and is not available to purchase from any other manufacturer.**

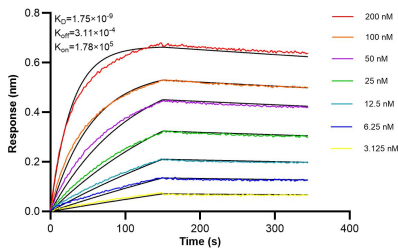
## Selected Validation Data



Various lysates were subjected to SDS PAGE followed by western blot with 87916-1-RR (PPP1R2 antibody) at dilution of 1:1000 incubated at room temperature for 1.5 hours. This data was developed using the same antibody clone with 87916-1-PBS in a different storage buffer formulation.

The mean PPP1R2 concentration was determined to be 148.2 ng/mL in Ramos cell extract based on a 1.5 mg/mL extract load, 26.8 ng/mL in Jurkat cell extract based on a 1.2 mg/mL extract load, 11.6 ng/mL in A549 cell extract based on a 1.2 mg/mL extract load.

Cytometric bead array standard curve of MP03258-1, PPP1R2 Recombinant Matched Antibody Pair, PBS Only. Capture antibody: 87916-1-PBS. Detection antibody: 87916-2-PBS. Standard: Ag0805. Range: 0.469-60 ng/mL.



Biolayer interferometry (BLI) kinetic assays of 87916-1-RR against Human PPP1R2 were performed. The affinity constant is 1.75 nM.