

For Research Use Only

# CRLF2 Recombinant monoclonal antibody

Catalog Number:87914-4-RR



## Basic Information

<b>Catalog Number:</b> 87914-4-RR	<b>GenBank Accession Number:</b> /	<b>Purification Method:</b> Protein A purification
<b>Source:</b> Rabbit	<b>GeneID (NCBI):</b> 57914	<b>CloneNo.:</b> 252992G8
<b>Isotype:</b> IgG	<b>UNIPROT ID:</b> Q8C1I9-1	<b>Recommended Dilutions:</b> WB: 1:500-1:2000
<b>Immunogen Catalog Number:</b> EG7520	<b>Full Name:</b> cytokine receptor-like factor 2	
	<b>Calculated MW:</b> 38 kDa	
	<b>Observed MW:</b> 38-45 kDa	

## Applications

<b>Tested Applications:</b> WB, ELISA	<b>Positive Controls:</b> WB : A20 cells, mouse lung tissue, mouse testis tissue
<b>Species Specificity:</b> mouse	

## Background Information

Cytokine receptor-like factor 2 (CRLF2), also known as the thymic stromal derived lymphopoietin receptor (TSLPR), which in combination with the interleukin 7 receptor  $\alpha$  chain (IL-7R) forms the receptor for thymic stromal lymphopoietin. CRLF2 is a type I cytokine receptor. CRLF2 rearrangements occur either as a translocation to the immunoglobulin heavy-chain enhancer region (IGH-CRLF2) or by a deletion of upstream PAR1 that leads to joining of CRLF2 to adjacent P2RY8. CRLF2 is expressed in heart, skeletal muscle, kidney and liver and is primarily expressed in dendrites and monocytes. The protein has phosphorylation modification and glycosylation modification.

## Storage

**Storage:**  
Store at -20°C. Stable for one year after shipment.  
**Storage Buffer:**  
PBS with 0.02% sodium azide and 50% glycerol, pH7.3  
Aliquoting is unnecessary for -20°C storage

For technical support and original validation data for this product please contact:

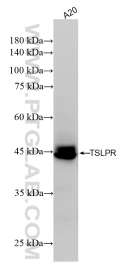
T: 4006900926

E: [Proteintech-CN@ptglab.com](mailto:Proteintech-CN@ptglab.com)

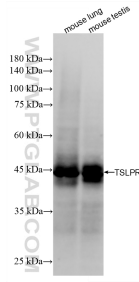
W: [ptgcn.com](http://ptgcn.com)

**This product is exclusively available under Proteintech Group brand and is not available to purchase from any other manufacturer.**

## Selected Validation Data



A20 cells were subjected to SDS PAGE followed by western blot with 87914-4-RR (TSLPR antibody) at dilution of 1:1000 incubated at room temperature for 1.5 hours.



Various lysates were subjected to SDS PAGE followed by western blot with 87914-4-RR (TSLPR antibody) at dilution of 1:1000 incubated at room temperature for 1.5 hours.