

For Research Use Only

Mouse CRLF2 Recombinant monoclonal antibody, PBS Only

Catalog Number:87914-4-PBS



Basic Information

Catalog Number: 87914-4-PBS	GenBank Accession Number: /	Purification Method: Protein A purification
Source: Rabbit	GeneID (NCBI): 57914	CloneNo.: 252992G8
Isotype: IgG	UNIPROT ID: Q8CII9-1	
Immunogen Catalog Number: EG7520	Full Name: cytokine receptor-like factor 2	
	Calculated MW: 38 kDa	
	Observed MW: 38-45 kDa	

Applications

Tested Applications:
WB, Indirect ELISA

Species Specificity:
mouse

Background Information

Cytokine receptor-like factor 2 (CRLF2), also known as the thymic stromal derived lymphopoietin receptor (TSLPR), which in combination with the interleukin 7 receptor α chain (IL-7R) forms the receptor for thymic stromal lymphopoietin. CRLF2 is a type I cytokine receptor. CRLF2 rearrangements occur either as a translocation to the immunoglobulin heavy-chain enhancer region (IGH-CRLF2) or by a deletion of upstream PAR1 that leads to joining of CRLF2 to adjacent P2RY8. CRLF2 is expressed in heart, skeletal muscle, kidney and liver and is primarily expressed in dendrites and monocytes. The protein has phosphorylation modification and glycosylation modification.

Storage

Storage:
Store at -80°C .
The product is shipped with ice packs. Upon receipt, store it immediately at -80°C

Storage Buffer:
PBS only, pH7.3

For technical support and original validation data for this product please contact:

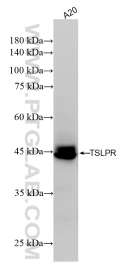
T: 4006900926

E: Proteintech-CN@ptglab.com

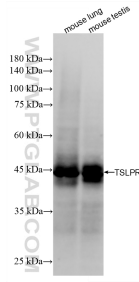
W: ptgcn.com

This product is exclusively available under Proteintech Group brand and is not available to purchase from any other manufacturer.

Selected Validation Data



A20 cells were subjected to SDS PAGE followed by western blot with 87914-4-RR (TSLPR antibody) at dilution of 1:1000 incubated at room temperature for 1.5 hours. This data was developed using the same antibody clone with 87914-4-PBS in a different storage buffer formulation.



Various lysates were subjected to SDS PAGE followed by western blot with 87914-4-RR (TSLPR antibody) at dilution of 1:1000 incubated at room temperature for 1.5 hours. This data was developed using the same antibody clone with 87914-4-PBS in a different storage buffer formulation.