

For Research Use Only

# MIEN1 Recombinant monoclonal antibody, PBS Only

Catalog Number: 87911-1-PBS



## Basic Information

<b>Catalog Number:</b> 87911-1-PBS	<b>GenBank Accession Number:</b> NM_032339.5	<b>Purification Method:</b> Protein A purification
<b>Source:</b> Rabbit	<b>GeneID (NCBI):</b> 84299	<b>CloneNo.:</b> 252392C9
<b>Isotype:</b> IgG	<b>UNIPROT ID:</b> Q9BRT3	
<b>Immunogen Catalog Number:</b> EG5748	<b>Full Name:</b> chromosome 17 open reading frame 37	
	<b>Calculated MW:</b> 12 kDa	
	<b>Observed MW:</b> 12 kDa	

## Applications

**Tested Applications:**  
WB, Indirect ELISA

**Species Specificity:**  
human

## Background Information

MIEN1 (Migration and Invasion Enhancer 1), also known as C17orf37 or RDEP, is a protein-coding gene located in the q12 region of chromosome 17. Through prenylation modification, this protein anchors to the inner side of the cell membrane, promotes actin cytoskeleton rearrangement and membrane ruffling, thereby enhancing the migration and invasion capabilities of tumor cells. MIEN1 is highly expressed in various malignant tumors, including breast cancer, prostate cancer, and lung cancer, and its expression level is closely correlated with tumor metastasis, clinical stage, and poor patient prognosis. Moreover, MIEN1 promotes epithelial-mesenchymal transition (EMT) by regulating signaling pathways such as PI3K/AKT and NF- $\kappa$ B, making it a potential anti-metastatic therapeutic target and prognostic marker.

## Storage

**Storage:**  
Store at -80°C.  
**The product is shipped with ice packs. Upon receipt, store it immediately at -80°C**

**Storage Buffer:**  
PBS only, pH7.3

For technical support and original validation data for this product please contact:

T: 4006900926

E: [Proteintech-CN@ptglab.com](mailto:Proteintech-CN@ptglab.com)

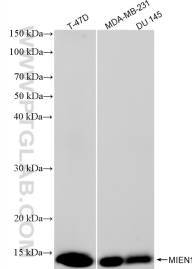
W: [ptgcn.com](http://ptgcn.com)

**This product is exclusively available under Proteintech Group brand and is not available to purchase from any other manufacturer.**

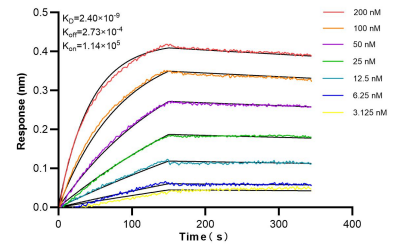
## Selected Validation Data



BT-474 cells were subjected to SDS PAGE followed by western blot with 87911-1-RR (MIEN1 antibody) at dilution of 1:2000 incubated at room temperature for 1.5 hours. This data was developed using the same antibody clone with 87911-1-PBS in a different storage buffer formulation.



Various lysates were subjected to SDS PAGE followed by western blot with 87911-1-RR (MIEN1 antibody) at dilution of 1:2000 incubated at room temperature for 1.5 hours. This data was developed using the same antibody clone with 87911-1-PBS in a different storage buffer formulation.



Biolayer interferometry (BLI) kinetic assays of 87911-1-RR against Human MIEN1 were performed. The affinity constant is 2.40 nM.