

For Research Use Only

Mouse CD298/ATP1B3 Recombinant monoclonal antibody, PBS Only (Capture)

Catalog Number: 87906-4-PBS



Basic Information

Catalog Number: 87906-4-PBS	GenBank Accession Number: NM_007502.6	Purification Method: Protein A purification
Source: Rabbit	GeneID (NCBI): 11933	CloneNo.: 260040C3
Isotype: IgG	UNIPROT ID: P97370	
Immunogen Catalog Number: EG8917	Full Name: ATPase, Na ⁺ /K ⁺ transporting, beta 3 polypeptide	
	Calculated MW: 32 kDa	

Applications

Tested Applications:
Cytometric bead array, Indirect ELISA

Species Specificity:
mouse

Background Information

Storage

Storage:
Store at -80°C.
The product is shipped with ice packs. Upon receipt, store it immediately at -80°C

Storage Buffer:
PBS only, pH7.3

For technical support and original validation data for this product please contact:

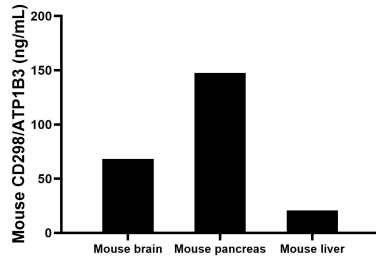
T: 4006900926

E: Proteintech-CN@ptglab.com

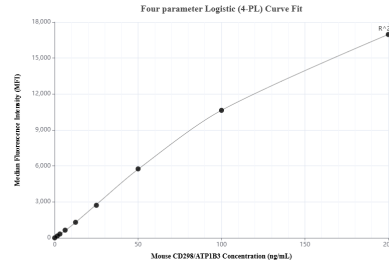
W: ptgcn.com

This product is exclusively available under Proteintech Group brand and is not available to purchase from any other manufacturer.

Selected Validation Data



The mean CD298/ATP1B3 concentration was determined to be 68.3 ng/mL in mouse brain tissue extract based on a 1.0 mg/mL extract load, 147.6 ng/mL in mouse pancreas tissue extract based on a 1.0 mg/mL extract load, 20.8 ng/mL in mouse liver tissue extract based on a 1.0 mg/mL extract load.



Cytometric bead array standard curve of MP03255-1, MOUSE CD298/ATP1B3 Recombinant Matched Antibody Pair, PBS Only. Capture antibody: 87906-4-PBS. Detection antibody: 87906-3-PBS. Standard: Eg8917. Range: 1.562-200 ng/mL.