

For Research Use Only

# Gephyrin/GPHN Recombinant monoclonal antibody

Catalog Number:87903-2-RR



## Basic Information

<b>Catalog Number:</b> 87903-2-RR	<b>GenBank Accession Number:</b> BC030016	<b>Purification Method:</b> Protein A purification
<b>Source:</b> Rabbit	<b>GeneID (NCBI):</b> 10243	<b>CloneNo.:</b> 260132F4
<b>Isotype:</b> IgG	<b>UNIPROT ID:</b> Q9NQX3	<b>Recommended Dilutions:</b> WB: 1:5000-1:50000
<b>Immunogen Catalog Number:</b> AG3370	<b>Full Name:</b> gephyrin	
	<b>Calculated MW:</b> 769 aa, 83 kDa	
	<b>Observed MW:</b> 93 kDa	

## Applications

<b>Tested Applications:</b> WB, ELISA	<b>Positive Controls:</b> WB : Jurkat cells, HeLa cells, A549 cells, LNCaP cells, HEK-293 cells
<b>Species Specificity:</b> human	

## Background Information

Gephyrin (GPHN) is an organizational protein that clusters and localizes the inhibitory glycine receptor (GlyR) and GABAA receptors to the microtubular matrix of the neuronal postsynaptic membrane. Mice deficient in gephyrin develop a hereditary molybdenum cofactor deficiency and a neurological phenotype that mimics startle disease (hyperekplexia). In non-neuronal tissues, the encoded protein is also required for molybdenum cofactor biosynthesis. Two isoforms produced by alternative splicing have been described. The observed MW of Gephyrin is 93 kDa, larger than the predicted of 83 kDa, which may be due to the modifications on various phosphorylation sites.

## Storage

**Storage:**  
Store at -20°C. Stable for one year after shipment.  
**Storage Buffer:**  
PBS with 0.02% sodium azide and 50% glycerol, pH7.3  
Aliquoting is unnecessary for -20°C storage

For technical support and original validation data for this product please contact:

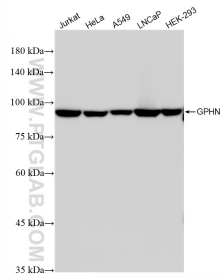
T: 4006900926

E: [Proteintech-CN@ptglab.com](mailto:Proteintech-CN@ptglab.com)

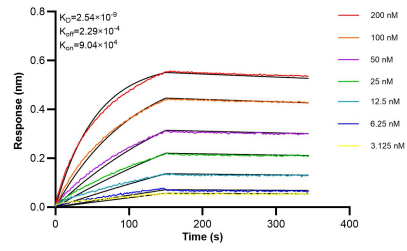
W: [ptgcn.com](http://ptgcn.com)

This product is exclusively available under Proteintech Group brand and is not available to purchase from any other manufacturer.

## Selected Validation Data



Various lysates were subjected to SDS PAGE followed by western blot with 87903-2-RR (GPHN antibody) at dilution of 1:10000 incubated at room temperature for 1.5 hours.



Biolayer interferometry (BLI) kinetic assays of 87903-2-RR against Human Gephyrin/GPHN were performed. The affinity constant is 2.54 nM.