

For Research Use Only

# C21orf45 Recombinant monoclonal antibody, PBS Only (Capture)

Catalog Number:87900-3-PBS



## Basic Information

Catalog Number:

87900-3-PBS

Source:

Rabbit

Isotype:

IgG

Immunogen Catalog Number:

AG22922

GenBank Accession Number:

BC042917

GeneID (NCBI):

54069

UNIPROT ID:

Q9NYP9

Full Name:

chromosome 21 open reading frame  
45

Calculated MW:

233 aa, 26 kDa

Purification Method:

Protein A purification

CloneNo.:

260121B5

## Applications

Tested Applications:

Cytometric bead array, Indirect ELISA

Species Specificity:

human

## Background Information

### Storage

Storage:

Store at -80°C.

**The product is shipped with ice packs. Upon receipt, store it immediately at -80°C**

Storage Buffer:

PBS only, pH7.3

For technical support and original validation data for this product please contact:

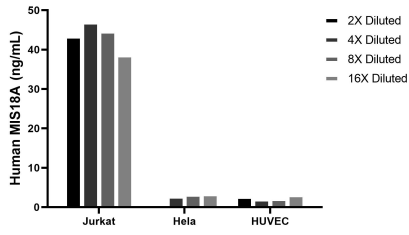
T: 4006900926

E: [Proteintech-CN@ptglab.com](mailto:Proteintech-CN@ptglab.com)

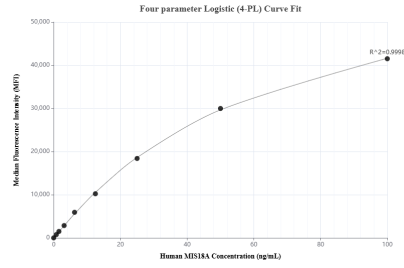
W: [ptgcn.com](http://ptgcn.com)

**This product is exclusively available under Proteintech Group brand and is not available to purchase from any other manufacturer.**

## Selected Validation Data



The mean MIS18A concentration was determined to be 43.3 ng/mL in Jurkat cell extract based on a 1.2 mg/mL extract load, 3.1 ng/mL in HeLa cell extract based on a 1.2 mg/mL extract load, 2.5 ng/mL in HUVEC cell extract based on a 1.2 mg/mL extract load.



Cytometric bead array standard curve of MP03248-1, MIS18A Recombinant Matched Antibody Pair, PBS Only. Capture antibody: 87900-3-PBS. Detection antibody: 87900-2-PBS. Standard: Ag22922. Range: 0.781-100 ng/mL