

For Research Use Only

FBP1 Recombinant monoclonal antibody, PBS Only (Capture)

Catalog Number: 87898-4-PBS



Basic Information

Catalog Number: 87898-4-PBS	GenBank Accession Number: BC012927	Purification Method: Protein A purification
Source: Rabbit	GeneID (NCBI): 2203	CloneNo.: 253535C8
Isotype: IgG	UNIPROT ID: P09467	
Immunogen Catalog Number: AG3837	Full Name: fructose-1,6-bisphosphatase 1	
	Calculated MW: 338 aa, 37 kDa	

Applications

Tested Applications:
Cytometric bead array, Sandwich ELISA, Indirect ELISA

Species Specificity:
human

Background Information

Storage

Storage:
Store at -80°C.
The product is shipped with ice packs. Upon receipt, store it immediately at -80°C

Storage Buffer:
PBS only, pH7.3

For technical support and original validation data for this product please contact:

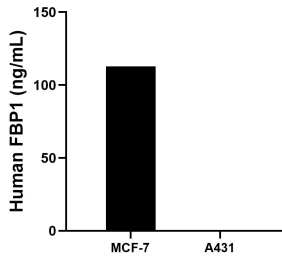
T: 4006900926

E: Proteintech-CN@ptglab.com

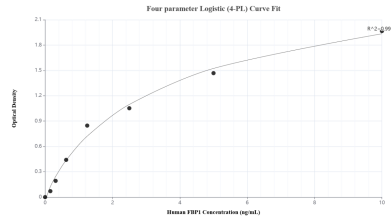
W: ptgcn.com

This product is exclusively available under Proteintech Group brand and is not available to purchase from any other manufacturer.

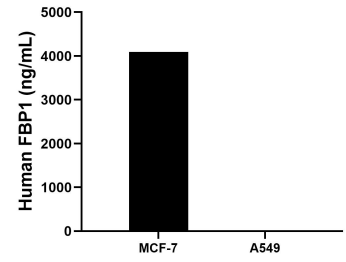
Selected Validation Data



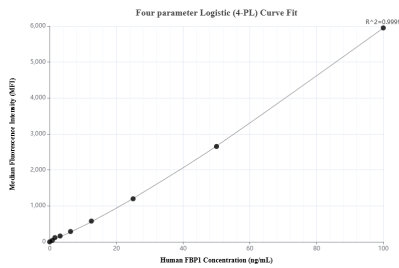
The mean FBP1 concentration was determined to be 112.85 ng/mL in MCF-7 cell extract based on a 1.50 mg/mL extract load and 0.58 ng/mL in A431 cell extract based on a 1.20 mg/mL extract load.



Sandwich ELISA standard curve of MP03257-2, Human FBP1 Recombinant Matched Antibody Pair - PBS only. 87898-4-PBS was coated to a plate as the capture antibody and incubated with serial dilutions of standard Ag3837. 87898-5-PBS was HRP conjugated as the detection antibody. Range: 0.156-10 ng/mL



The mean FBP1 concentration was determined to be 4096.2 ng/mL in MCF-7 cell extract based on a 1.2 mg/mL extract load, A549 cell extract were served as a negative control.



Cytometric bead array standard curve of MP03257-1, FBP1 Recombinant Matched Antibody Pair, PBS Only. Capture antibody: 87898-4-PBS. Detection antibody: 87898-3-PBS. Standard: Ag3837. Range: 0.781-100 ng/mL