

For Research Use Only

CWC15 Recombinant monoclonal antibody

Catalog Number: 87890-1-RR



Basic Information

Catalog Number: 87890-1-RR	GenBank Accession Number: BC040946	Purification Method: Protein A purification
Source: Rabbit	GeneID (NCBI): 51503	CloneNo.: 260028B2
Isotype: IgG	UNIPROT ID: Q9P013	Recommended Dilutions: WB: 1:500-1:2000 IF/ICC: 1:500-1:2000
Immunogen Catalog Number: AG18116	Full Name: CWC15 spliceosome-associated protein homolog (S. cerevisiae)	
	Calculated MW: 229 aa, 27 kDa	
	Observed MW: 34 kDa	

Applications

Tested Applications: WB, IF/ICC, ELISA	Positive Controls: WB : SW 1990 cells, PC-3 cells
Species Specificity: human	IF/ICC : HeLa cells,

Background Information

CWC15, also named as C11orf5 or Spliceosome-associated protein CWC15 homolog, is a 229 amino acid protein, which belongs to the CWC15 family. CWC15 as a Component of the PRP19-CDC5L complex that forms an integral part of the spliceosome and is required for activating pre-mRNA splicing.

Storage

Storage:
Store at -20°C. Stable for one year after shipment.
Storage Buffer:
PBS with 0.02% sodium azide and 50% glycerol, pH7.3
Aliquoting is unnecessary for -20°C storage

For technical support and original validation data for this product please contact:

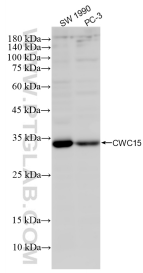
T: 4006900926

E: Proteintech-CN@ptglab.com

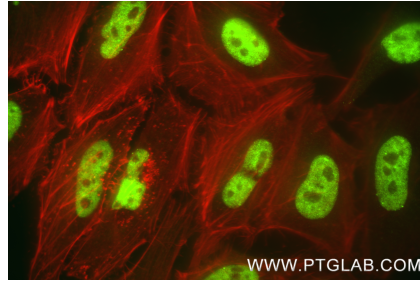
W: ptgcn.com

This product is exclusively available under Proteintech Group brand and is not available to purchase from any other manufacturer.

Selected Validation Data



Various lysates were subjected to SDS PAGE followed by western blot with 87890-1-RR (CWC15 antibody) at dilution of 1:1000 incubated at room temperature for 1.5 hours.



Immunofluorescent analysis of (4% PFA) fixed HeLa cells using CWC15 antibody (87890-1-RR, Clone: 260028B2) at dilution of 1:1000 and CoraLite® 488-Conjugated Goat Anti-Rabbit IgG(H+L) (SA00013-2).