

For Research Use Only

# ULBP3 Recombinant monoclonal antibody, PBS Only (Detector)

Catalog Number:87888-1-PBS



## Basic Information

<b>Catalog Number:</b> 87888-1-PBS	<b>GenBank Accession Number:</b> NM_024518.3	<b>Purification Method:</b> Protein A purification
<b>Source:</b> Rabbit	<b>GeneID (NCBI):</b> 79465	<b>CloneNo.:</b> 253235G7
<b>Isotype:</b> IgG	<b>UNIPROT ID:</b> Q9BZM4	
<b>Immunogen Catalog Number:</b> EG2810	<b>Full Name:</b> UL16 binding protein 3	
	<b>Calculated MW:</b> 28 kDa	

## Applications

**Tested Applications:**  
Sandwich ELISA, Indirect ELISA

**Species Specificity:**  
human

## Background Information

### Storage

**Storage:**  
Store at -80°C.  
**The product is shipped with ice packs. Upon receipt, store it immediately at -80°C**

**Storage Buffer:**  
PBS only, pH7.3

For technical support and original validation data for this product please contact:

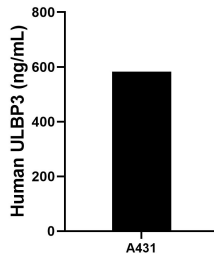
T: 4006900926

E: [Proteintech-CN@ptglab.com](mailto:Proteintech-CN@ptglab.com)

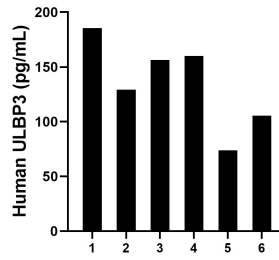
W: [ptgcn.com](http://ptgcn.com)

**This product is exclusively available under Proteintech Group brand and is not available to purchase from any other manufacturer.**

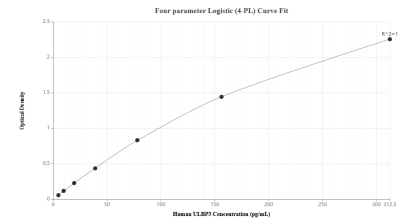
## Selected Validation Data



A431 were cultured in DMEM supplemented with 10% fetal bovine serum, 2.5 mM L-glutamine, 100 U/mL penicillin, and 100  $\mu$ g/mL streptomycin sulfate. An aliquot of the cell culture supernate was removed, assayed for human ULBP3, and measured 582.2 pg/mL.



Serum of six individual healthy human donors was measured. The human ULBP3 concentration of detected samples was determined to be 135.0 pg/mL with a range of 73.7 - 185.5 pg/mL.



Sandwich ELISA standard curve of MP03230-1, Human ULBP3 Recombinant Matched Antibody Pair - PBS only. 87888-2-PBS was coated to a plate as the capture antibody and incubated with serial dilutions of standard Eg2810. 87888-1-PBS was HRP conjugated as the detection antibody. Range: 4.88-312.5 pg/mL