

For Research Use Only

WNT1 Recombinant monoclonal antibody

Catalog Number: 87881-1-RR



Basic Information

Catalog Number: 87881-1-RR	GenBank Accession Number: BC074799	Purification Method: Protein A purification
Source: Rabbit	GeneID (NCBI): 7471	CloneNo.: 253400F10
Isotype: IgG	UNIPROT ID: P04628	Recommended Dilutions: WB: 1:5000-1:50000
Immunogen Catalog Number: AG27380	Full Name: wingless-type MMTV integration site family, member 1	
	Observed MW: 41 kDa	

Applications

Tested Applications: WB, ELISA	Positive Controls: WB : SKOV-3 cells, L02 cells, HeLa cells, Jurkat cells, HepG2 cells
Species Specificity: human	

Background Information

Wingless-related MMTV integration site 1 (Wnt1), a cysteine-rich glycosylated protein related to the Drosophila protein Wingless, has been shown to inhibit microglial inflammatory activation in a variety of CNS diseases, such as ischemic reperfusion injury in the brain, intracerebral hemorrhage, Alzheimer's disease, and Parkinson's disease (PMID: 40025242). Wnt1 is expressed in the dorsal part, and it is necessary for the maintenance of Fgf8 expression. This molecule is essential for the induction of the midbrain and the cerebellum (PMID: 34722541, PMID: 1583219). Wnt1 as a bone anabolic Wnt ligand in long bones and in alveolar bone and cementum formation during tooth maintenance (PMID: 30404864, PMID: 34009051). Wnt1 is a key regulator of neural crest cells, which constitute most of the facial mesenchymal cells (PMID:792502).

Storage

Storage:
Store at -20°C. Stable for one year after shipment.
Storage Buffer:
PBS with 0.02% sodium azide and 50% glycerol, pH7.3
Aliquoting is unnecessary for -20°C storage

For technical support and original validation data for this product please contact:

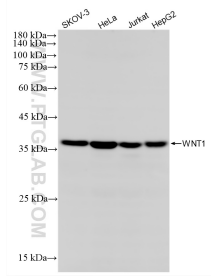
T: 4006900926

E: Proteintech-CN@ptglab.com

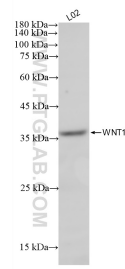
W: ptgcn.com

This product is exclusively available under Proteintech Group brand and is not available to purchase from any other manufacturer.

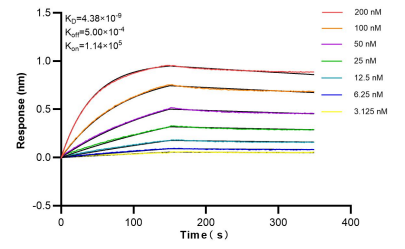
Selected Validation Data



Various lysates were subjected to SDS PAGE followed by western blot with 87881-1-RR (WNT1 antibody) at dilution of 1:10000 incubated at room temperature for 1.5 hours.



L02 cells were subjected to SDS PAGE followed by western blot with 87881-1-RR (WNT1 antibody) at dilution of 1:10000 incubated at room temperature for 1.5 hours.



Bioluminescence resonance energy transfer (BRET) kinetic assays of 87881-1-RR against Human WNT1 were performed. The affinity constant is 4.38 nM.