

For Research Use Only

PDHX Recombinant monoclonal antibody

Catalog Number: 87880-1-RR



Basic Information

Catalog Number: 87880-1-RR	GenBank Accession Number: BC010389	Purification Method: Protein A purification
Source: Rabbit	GeneID (NCBI): 8050	CloneNo.: 253557E3
Isotype: IgG	UNIPROT ID: O00330	Recommended Dilutions: WB: 1:20000-1:100000
Immunogen Catalog Number: AG21034	Full Name: pyruvate dehydrogenase complex, component X	
	Calculated MW: 54 kDa	
	Observed MW: 54 kDa	

Applications

Tested Applications: WB, ELISA	Positive Controls: WB : HepG2 cells, BxPC-3 cells, HEK-293 cells, SKOV-3 cells, NIH/3T3 cells
Species Specificity: human, mouse	

Background Information

PDHX (Pyruvate dehydrogenase protein X component), an E3-binding protein in the PDC, is acetylated by the p300 at Lys 488, impeding the interaction between PDHX and dihydrolipoyl transacetylase (E2), thereby disrupting PDC assembly to inhibit its activation (PMID: 30012170). PDHX was characterized as a metabolically essential gene for esophageal squamous cell carcinoma (ESCC), and knockdown of PDHX inhibited the proliferation of cancer stem cells (CSCs) and in vivo tumor growth (PMID: 33964039). Western blot analysis detected PDHX at an apparent molecular mass of 54 kDa.

Storage

Storage:
Store at -20°C. Stable for one year after shipment.

Storage Buffer:
PBS with 0.02% sodium azide and 50% glycerol, pH7.3

Aliquoting is unnecessary for -20°C storage

For technical support and original validation data for this product please contact:

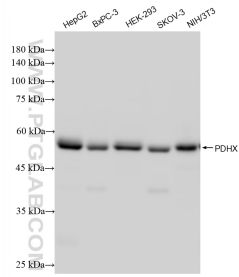
T: 4006900926

E: Proteintech-CN@ptglab.com

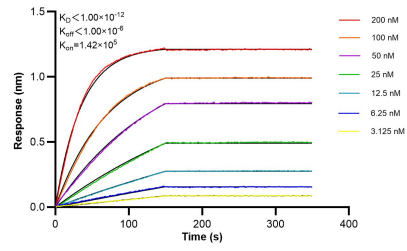
W: ptgcn.com

This product is exclusively available under Proteintech Group brand and is not available to purchase from any other manufacturer.

Selected Validation Data



Various lysates were subjected to SDS PAGE followed by western blot with 87880-1-RR (PDHX antibody) at dilution of 1:50000 incubated at room temperature for 1.5 hours.



Biolayer interferometry (BLI) kinetic assays of 87880-1-RR against Human PDHX were performed. The affinity constant is below 1 pM.