

For Research Use Only

# CDR2 Recombinant monoclonal antibody, PBS Only (Detector)

Catalog Number: 87868-2-PBS



## Basic Information

Catalog Number:

87868-2-PBS

Source:

Rabbit

Isotype:

IgG

Immunogen Catalog Number:

AG24100

GenBank Accession Number:

BC017503

GeneID (NCBI):

1039

UNIPROT ID:

Q01850

Full Name:

cerebellar degeneration-related protein 2, 62kDa

Calculated MW:

454 aa, 52 kDa

Purification Method:

Protein A purification

CloneNo.:

253563C8

## Applications

Tested Applications:

Cytometric bead array, Indirect ELISA

Species Specificity:

human

## Background Information

### Storage

Storage:

Store at -80°C.

**The product is shipped with ice packs. Upon receipt, store it immediately at -80°C**

Storage Buffer:

PBS only, pH7.3

For technical support and original validation data for this product please contact:

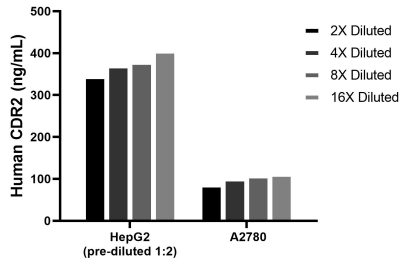
T: 4006900926

E: [Proteintech-CN@ptglab.com](mailto:Proteintech-CN@ptglab.com)

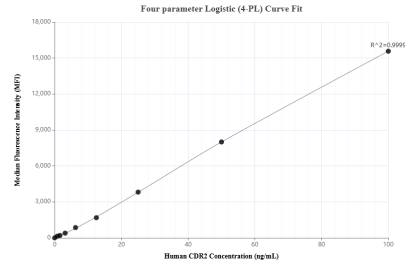
W: [ptgcn.com](http://ptgcn.com)

**This product is exclusively available under Proteintech Group brand and is not available to purchase from any other manufacturer.**

## Selected Validation Data



The mean CDR2 concentration was determined to be 374.0 ng/mL in HepG2 cell extract based on a 1.5 mg/mL extract load, 100.6 ng/mL in A2780 cell extract based on a 1.2 mg/mL extract load.



Cytometric bead array standard curve of MP03234-1, CDR2 Recombinant Matched Antibody Pair, PBS Only. Capture antibody: 87868-1-PBS. Detection antibody: 87868-2-PBS. Standard: Ag24100. Range: 0.781-100 ng/mL