

For Research Use Only

CDR2 Recombinant monoclonal antibody, PBS Only (Capture)

Catalog Number: 87868-1-PBS



Basic Information

Catalog Number: 87868-1-PBS	GenBank Accession Number: BC017503	Purification Method: Protein A purification
Source: Rabbit	GeneID (NCBI): 1039	CloneNo.: 253563C10
Isotype: IgG	UNIPROT ID: Q01850	
Immunogen Catalog Number: AG24100	Full Name: cerebellar degeneration-related protein 2, 62kDa	
	Calculated MW: 454 aa, 52 kDa	

Applications

Tested Applications:
Cytometric bead array, Indirect ELISA

Species Specificity:
human

Background Information

Storage

Storage:
Store at -80°C.
The product is shipped with ice packs. Upon receipt, store it immediately at -80°C

Storage Buffer:
PBS only, pH7.3

For technical support and original validation data for this product please contact:

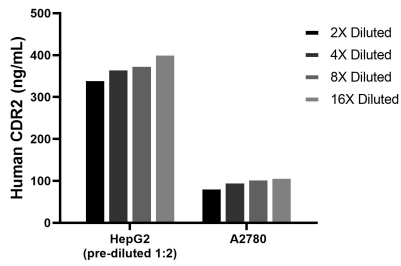
T: 4006900926

E: Proteintech-CN@ptglab.com

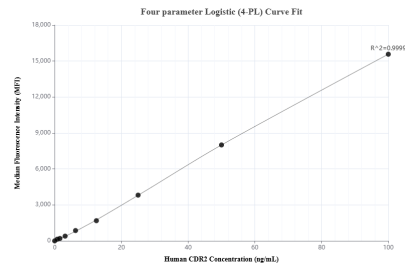
W: ptgcn.com

This product is exclusively available under Proteintech Group brand and is not available to purchase from any other manufacturer.

Selected Validation Data



The mean CDR2 concentration was determined to be 374.0 ng/mL in HepG2 cell extract based on a 1.5 mg/mL extract load, 100.6 ng/mL in A2780 cell extract based on a 1.2 mg/mL extract load.



Cytometric bead array standard curve of MP03234-1, CDR2 Recombinant Matched Antibody Pair, PBS Only. Capture antibody: 87868-1-PBS. Detection antibody: 87868-2-PBS. Standard: Ag24100. Range: 0.781-100 ng/mL