

For Research Use Only

SLC28A2 Recombinant monoclonal antibody

Catalog Number: 87846-1-RR



Basic Information

Catalog Number:

87846-1-RR

Source:

Rabbit

Isotype:

IgG

GenBank Accession Number:

BC093737

GeneID (NCBI):

9153

UNIPROT ID:

O43868

Full Name:

solute carrier family 28 (sodium-coupled nucleoside transporter), member 2

Calculated MW:

658 aa, 72 kDa

Observed MW:

65-71 kDa

Purification Method:

Protein A purification

CloneNo.:

253453A3

Recommended Dilutions:

WB: 1:500-1:2000

Applications

Tested Applications:

WB, ELISA

Species Specificity:

human, mouse, rat

Positive Controls:

WB: mouse brain tissue, rat brain tissue

Background Information

Solute carrier family 28 member 2 (SLC28A2), also called concentrative nucleoside transporter 2 (CNT2), is found mainly in the gastrointestinal tract and kidney (PMID: 10087507). The SLC28A2 gene, which is mapped to chromosome 15q21.1 in humans, encodes a sodium/nucleoside symporter preferentially located at the apical side of polarized epithelia, thereby mediating the unidirectional uptake of sodium ions coupled with nucleosides (PMID: 29928232). SLC28A2, a sodium-dependent and purine-selective transporter, has been reported to translocate antiviral purine analogs (PMID: 36244249). SLC28A2 gene, is expressed in luminal membrane of intestine and mediates efficient transport of dietary purine nucleosides and nucleoside analog ribavirin (PMID: 30679935).

Storage

Storage:

Store at -20°C. Stable for one year after shipment.

Storage Buffer:

PBS with 0.02% sodium azide and 50% glycerol, pH7.3

Aliquoting is unnecessary for -20°C storage

For technical support and original validation data for this product please contact:

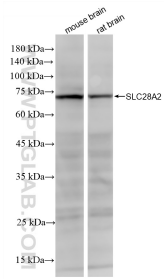
T: 4006900926

E: Proteintech-CN@ptglab.com

W: ptgcn.com

This product is exclusively available under Proteintech Group brand and is not available to purchase from any other manufacturer.

Selected Validation Data



mouse brain tissue were subjected to SDS PAGE followed by western blot with 87846-1-RR (SLC28A2 antibody) at dilution of 1:1000 incubated at room temperature for 1.5 hours.