

For Research Use Only

# SLC28A2 Recombinant monoclonal antibody, PBS Only

Catalog Number: 87846-1-PBS



## Basic Information

<b>Catalog Number:</b> 87846-1-PBS	<b>GenBank Accession Number:</b> BC093737	<b>Purification Method:</b> Protein A purification
<b>Source:</b> Rabbit	<b>GeneID (NCBI):</b> 9153	<b>CloneNo.:</b> 253453A3
<b>Isotype:</b> IgG	<b>UNIPROT ID:</b> O43868	
	<b>Full Name:</b> solute carrier family 28 (sodium-coupled nucleoside transporter), member 2	
	<b>Calculated MW:</b> 658 aa, 72 kDa	
	<b>Observed MW:</b> 65-71 kDa	

## Applications

**Tested Applications:**  
WB, Indirect ELISA

**Species Specificity:**  
human, mouse, rat

## Background Information

Solute carrier family 28 member 2 (SLC28A2), also called concentrative nucleoside transporter 2 (CNT2), is found mainly in the gastrointestinal tract and kidney (PMID: 10087507). The SLC28A2 gene, which is mapped to chromosome 15q21.1 in humans, encodes a sodium/nucleoside symporter preferentially located at the apical side of polarized epithelia, thereby mediating the unidirectional uptake of sodium ions coupled with nucleosides (PMID: 29928232). SLC28A2, a sodium-dependent and purine-selective transporter, has been reported to translocate antiviral purine analogs (PMID: 36244249). SLC28A2 gene, is expressed in luminal membrane of intestine and mediates efficient transport of dietary purine nucleosides and nucleoside analog ribavirin (PMID: 30679935).

## Storage

**Storage:**  
Store at -80°C.  
**The product is shipped with ice packs. Upon receipt, store it immediately at -80°C**

**Storage Buffer:**  
PBS only, pH7.3

For technical support and original validation data for this product please contact:

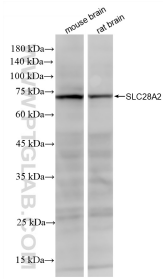
T: 4006900926

E: [Proteintech-CN@ptglab.com](mailto:Proteintech-CN@ptglab.com)

W: [ptgcn.com](http://ptgcn.com)

**This product is exclusively available under Proteintech Group brand and is not available to purchase from any other manufacturer.**

## Selected Validation Data



mouse brain tissue were subjected to SDS PAGE followed by western blot with 87846-1-RR (SLC28A2 antibody) at dilution of 1:1000 incubated at room temperature for 1.5 hours. This data was developed using the same antibody clone with 87846-1-PBS in a different storage buffer formulation.