

For Research Use Only

BMI1 Recombinant monoclonal antibody, PBS Only (Capture)

Catalog Number:87836-4-PBS



Basic Information

Catalog Number:

87836-4-PBS

Source:

Rabbit

Isotype:

IgG

Immunogen Catalog Number:

AG1286

GenBank Accession Number:

BC011652

GeneID (NCBI):

648

UNIPROT ID:

P35226

Full Name:

BMI1 polycomb ring finger oncogene

Calculated MW:

37 kDa

Purification Method:

Protein A purification

CloneNo.:

253339E6

Applications

Tested Applications:

Sandwich ELISA, Indirect ELISA

Species Specificity:

human

Background Information

Storage

Storage:

Store at -80°C.

The product is shipped with ice packs. Upon receipt, store it immediately at -80°C

Storage Buffer:

PBS only, pH7.3

For technical support and original validation data for this product please contact:

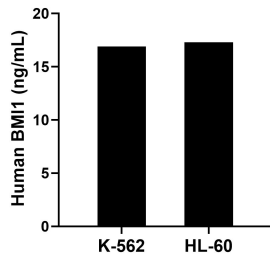
T: 4006900926

E: Proteintech-CN@ptglab.com

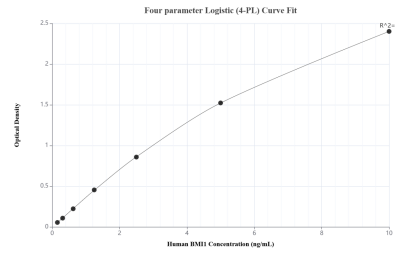
W: ptgcn.com

This product is exclusively available under Proteintech Group brand and is not available to purchase from any other manufacturer.

Selected Validation Data



The mean BMI 1 concentration was determined to be 16.90 ng/mL in K-562 cell extract based on a 1.20 mg/mL extract load and 17.30 ng/mL in HL-60 cell extract based on a 1.50 mg/mL extract load.



Sandwich ELISA standard curve of MP03232-2, Human BMI 1 Recombinant Matched Antibody Pair - PBS only. 87836-4-PBS was coated to a plate as the capture antibody and incubated with serial dilutions of standard Ag1286. 87836-2-PBS was HRP conjugated as the detection antibody. Range: 0.156-10 ng/mL.