

For Research Use Only

Mouse NPR1 Recombinant monoclonal antibody, PBS Only

Catalog Number:87831-1-PBS



Basic Information

Catalog Number: 87831-1-PBS	GenBank Accession Number: NM_008727.5	Purification Method: Protein A purification
Source: Rabbit	GeneID (NCBI): 18160	CloneNo.: 251242G3
Isotype: IgG	UNIPROT ID: P18293	
Immunogen Catalog Number: EG2985	Full Name: natriuretic peptide receptor 1	
	Calculated MW: 119 kDa	
	Observed MW: 119-140 kDa	

Applications

Tested Applications:
WB, Indirect ELISA

Species Specificity:
mouse

Background Information

NPR1(Atrial natriuretic peptide receptor 1), also named as NPRA , is a transmembrane protein expressed in the vascular endothelium. Activation of NPRA requires a binding of natriuretic peptides NPPA (ANP) or NPPB (BNP) to its extracellular domain and this promotes the production of cyclic guanosine monophosphate (cGMP), which in turn activates protein kinase cGMP - dependent 1 (PRKG1 or commonly used as PKG).

Storage

Storage:
Store at -80°C.
The product is shipped with ice packs. Upon receipt, store it immediately at -80°C

Storage Buffer:
PBS only, pH7.3

For technical support and original validation data for this product please contact:

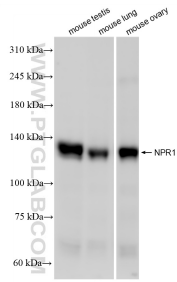
T: 4006900926

E: Proteintech-CN@ptglab.com

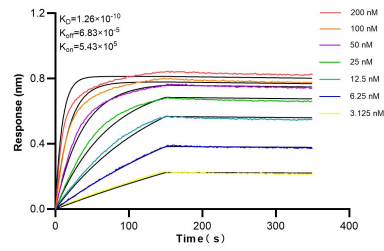
W: ptgcn.com

This product is exclusively available under Proteintech Group brand and is not available to purchase from any other manufacturer.

Selected Validation Data



Various lysates were subjected to SDS PAGE followed by western blot with 87831-1-RR (Npr1 antibody) at dilution of 1:1000 incubated at room temperature for 1.5 hours. This data was developed using the same antibody clone with 87831-1-PBS in a different storage buffer formulation.



Biolayer interferometry (BLI) kinetic assays of 87831-1-RR against Mouse NPR1 were performed. The affinity constant is 0.126 nM.