

For Research Use Only

IFNA14 Recombinant monoclonal antibody

Catalog Number: 87828-1-RR



Basic Information

Catalog Number:

87828-1-RR

Source:

Rabbit

Isotype:

IgG

Immunogen Catalog Number:

EG5295

GenBank Accession Number:

BC074956

GeneID (NCBI):

3448

UNIPROT ID:

P01570

Full Name:

interferon, alpha 14

Observed MW:

23 kDa

Purification Method:

Protein A purification

CloneNo.:

252962C1

Recommended Dilutions:

WB: 1:1000-1:8000

Applications

Tested Applications:

WB, ELISA

Species Specificity:

human

Positive Controls:

WB : Recombinant protein, Transfected with IFNA14 HEK-293T cells

Background Information

IFNA14 (Interferon α -14) is a type I interferon encoded by a gene located on chromosome 9 (9p21.3). It is mainly produced by macrophages and other cells. By binding to interferon receptors (IFNAR), it initiates signaling pathways such as JAK-STAT, playing a crucial role in antiviral immunity (especially against HIV-1), tumor occurrence, and immune regulation.

Storage

Storage:

Store at -20°C. Stable for one year after shipment.

Storage Buffer:

PBS with 0.02% sodium azide and 50% glycerol, pH7.3

Aliquoting is unnecessary for -20°C storage

For technical support and original validation data for this product please contact:

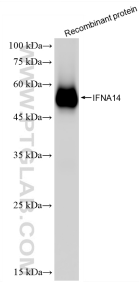
T: 4006900926

E: Proteintech-CN@ptglab.com

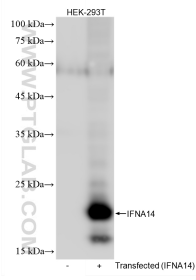
W: ptgcn.com

This product is exclusively available under Proteintech Group brand and is not available to purchase from any other manufacturer.

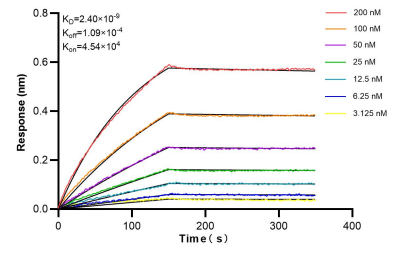
Selected Validation Data



Recombinant protein were subjected to SDS PAGE followed by western blot with 87828-1-RR (IFNA14 antibody) at dilution of 1:4000 incubated at room temperature for 1.5 hours.



Transfected with IFNA14 HEK-293T cells were subjected to SDS PAGE followed by western blot with 87828-1-RR (IFNA14 antibody) at dilution of 1:4000 incubated at room temperature for 1.5 hours.



Bi-layer interferometry (BLI) kinetic assays of 87828-1-RR against Human IFNA14 were performed. The affinity constant is 2.40 nM.