

For Research Use Only

# Mouse CXCR1/IL-8RA Recombinant monoclonal antibody, PBS Only

Catalog Number:87819-1-PBS



## Basic Information

<b>Catalog Number:</b> 87819-1-PBS	<b>GenBank Accession Number:</b> BC153097	<b>Purification Method:</b> Protein A purification
<b>Source:</b> Rabbit	<b>GeneID (NCBI):</b> 227288	<b>CloneNo.:</b> 252418E9
<b>Isotype:</b> IgG	<b>UNIPROT ID:</b> Q810W6	
	<b>Full Name:</b> interleukin 8 receptor, alpha	
	<b>Observed MW:</b> 45 kDa	

## Applications

**Tested Applications:**  
WB, Indirect ELISA

**Species Specificity:**  
mouse

## Background Information

Mouse Il8ra/Cxcr1 is a Gi-coupled ELR\* CXC chemokine receptor expressed mainly on neutrophils, where it contributes to chemotaxis, activation, and inflammatory host defense. Because mice lack a direct IL-8/CXCL8 ortholog, the historical name Il8ra does not fully reflect murine ligand biology, and Cxcr1 is generally considered a more restricted, context-dependent receptor relative to Cxcr2. This distinction is important when using mouse models to study neutrophil trafficking and translational CXCR1 biology.

## Storage

**Storage:**  
Store at -80°C.  
**The product is shipped with ice packs. Upon receipt, store it immediately at -80°C**

**Storage Buffer:**  
PBS only, pH7.3

For technical support and original validation data for this product please contact:

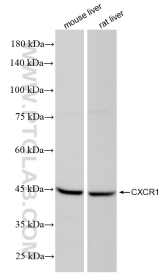
T: 4006900926

E: Proteintech-CN@ptglab.com

W: ptgcn.com

**This product is exclusively available under Proteintech Group brand and is not available to purchase from any other manufacturer.**

## Selected Validation Data



Various lysates were subjected to SDS PAGE followed by western blot with 87819-1-RR (Il8ra(CXCR1) antibody) at dilution of 1:2000 incubated at room temperature for 1.5 hours. This data was developed using the same antibody clone with 87819-1-PBS in a different storage buffer formulation.